

FRONTIER PROJECT #5297198

SUBMITTED BY CYIENT ON BEHALF OF FRONTIER COMMUNICATIONS
FRONTIER CONTACT: DARRIN ALBRECHT, DARRIN.L.ALBRECHT@FTR.COM, 281.229.0849

APPLICATION TO INSTALL PRIVATE LINE

DATE: 8/4/2022

TO THE COMMISSIONERS COURT OF BROWN COUNTY,

Application is hereby made by FRONTIER COMMUNICATIONS to install a buried or aerial water
fiber optic cable x telephone electric gas line within the right-of-way and/or across a county road in Brown County,

Texas, as follows:

CR292,346 AND ALONG AND ACROSS RDS IN ATTACHED PLAN

Precinct # 3 Location: _____ This will involve a bore or cut .

The location and description of the proposed line and associated appurtenances is more fully shown by the plat of such line attached to this application. The line will be constructed and maintained on the County right-of-way in accordance with governing laws. And installed at a depth of 24" to 30" below the lowest level of the bar ditch.

The applicant agrees to remove or relocate such fixtures at his own expense so as to permit the widening or changing of traffic lanes or reconstruction of the roadbed. Such removal or relocation shall be within 30 days of written notice specifying the fixtures to be moved and indicate the place on the roadway to which they shall be replaced.

Notwithstanding any other provision contained herein, it is expressly understood that tender of this notice by the undersigned does not constitute a waiver, surrender, abandonment or impairment of any property rights, franchise, easement, license, authority, permission, privilege or right now granted by law or may be granted in the future and any provision of provisions so construed shall be null and void.

The Commissioner of the above precinct will be notified of the time and date of installation at least 24 hours in advance.

This permit will become null and void if work is not completed within 90 days from date of acceptance by the Brown County Commissioners Court.

I certify that the above-proposed installation will not impair or harm the ingress and egress of adjacent landowners.

Construction of this line will begin on or after the 15 day of SEPTEMBER 20 22

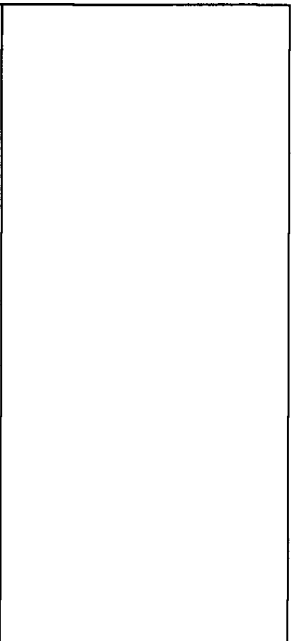
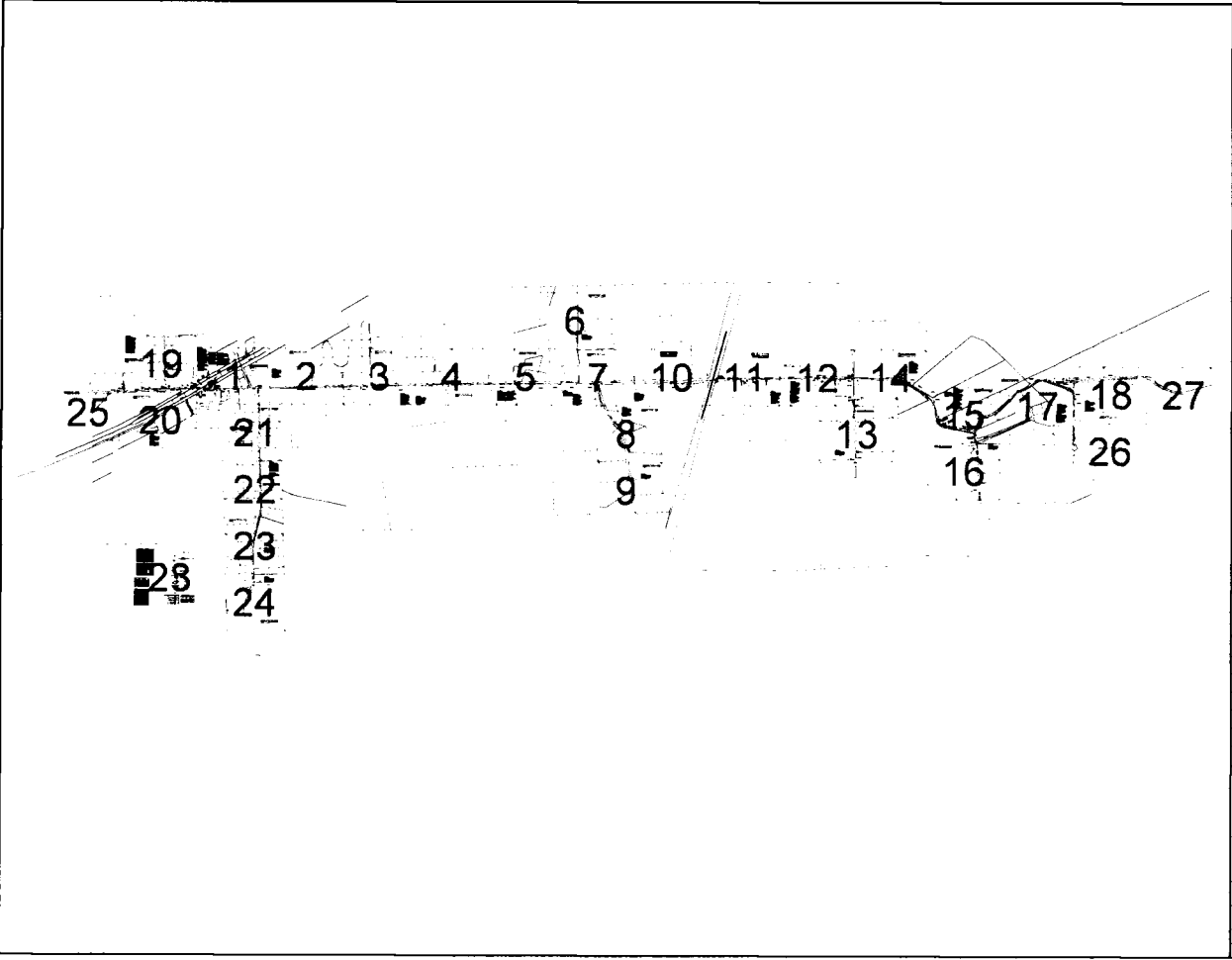
CR292

By CHRISTIAN REESE (ON BEHALF OF FRONTIER COMMUNICATIONS)

Address CHRISTIAN.REESE@CYIENT.COM

Phone 662.400.9330

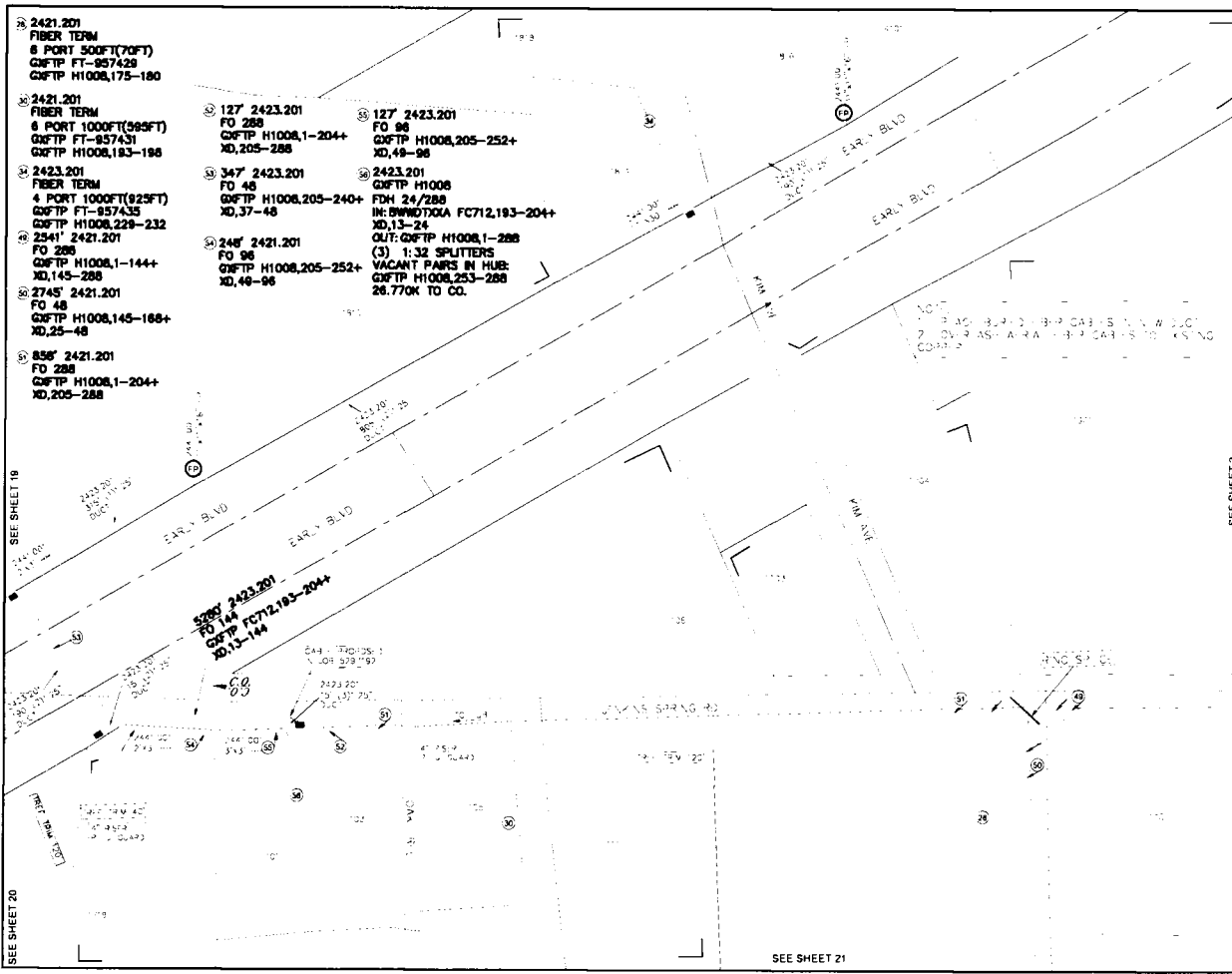
October 17, 2022
(Exhibit # 14)



REVISIONS

Frontier
 COMMUNICATIONS
 BROWNWOOD
 FDH HUB H1008

PROJECT NUMBER	5297198	C.O. AREA	BROWNWOOD
EXCH. CODE	70372	CITY	BROWN
DRAWN DATE	07/25/2022	ENGR	FILE
PHONE	NA	TAX DISTRICT	T0090
SCALE	1=100	DWG	OF
TOWNSHIP	RNG	SEC	



- 2421.201
FIBER TERM
6 PORT 500FT(70FT)
GFPT FT-957429
GFPT H1008,175-180
- 2421.201
FIBER TERM
6 PORT 1000FT(595FT)
GFPT FT-957431
GFPT H1008,183-198
- 2423.201
FIBER TERM
4 PORT 1000FT(925FT)
GFPT FT-957435
GFPT H1008,229-232
- 2541' 2421.201
FO 288
GFPT H1008,1-144+
XD,145-288
- 2745' 2421.201
FO 48
GFPT H1008,145-168+
XD,25-48
- 858' 2421.201
FO 288
GFPT H1008,1-204+
XD,205-288

- 127' 2423.201
FO 288
GFPT H1008,1-204+
XD,205-288
- 347' 2423.201
FO 48
GFPT H1008,205-240+
XD,37-48
- 248' 2421.201
FO 96
GFPT H1008,205-252+
XD,48-96
- 127' 2423.201
FO 96
GFPT H1008,205-252+
XD,48-96
- 2423.201
GFPT H1008
FDH 24/288
IN: 8WMDX0A FC712,193-204+
XD,13-24
OLT: GFPT H1008,1-288
(3) 1:32 SPLITTERS
VACANT PARS IN HUB:
GFPT H1008,253-288
26.77OK TO CO.

5208' 2423.201
FO 144
GFPT FC712,183-204+
XD,13-144

UNITS / ACCT CODES

FP004	1
FP580	1
FP030	3
FP015	2
FP017	1
FP033A	2205
FP034A	1850
FP22D	6392
FP43F	601
FP47B	280
FP58A	2
FP58B	2
FS26	188
FS27	76
FS50	12
FS14	1
FS51	26
FS14	1
FS51	48
FS14	1
FS51	48
FS14	1
FS53	252
FS14	1
FP58A	190
FP58B	695
FP58C	315

REVISIONS

Frontier
COMMUNICATIONS
BROWNWOOD
FDH HUB H1008

PROJECT NUMBER: 5297198
C.O. AREA: BROWNWOOD
EXCH. CODE: 70372
DRAIN DATE: ENGR: CLIENT: CATTY: BROWN
07/25/2022 PHONE: N/A FILE
SCALE: 1"=100' TAX DISTRICT: T0090 DWG: 1 OF 28
TWN: SHP: RNC: SEC:

NO.
COUNTY AS - A - A - B - R - O - A - S - O - A - S - T - O
COUNTY

② 2421.201
FIBER TERM
6 PORT 1000FT(865FT)
GXFTP FT-857430
GXFTP H1008,181-188

④ 2541* 2421.201
FD 288
GXFTP H1008,1-144+
XD,145-288

SEE SHEET 1

SEE SHEET 3

COUNTY ROAD 290

SEE SHEET 21

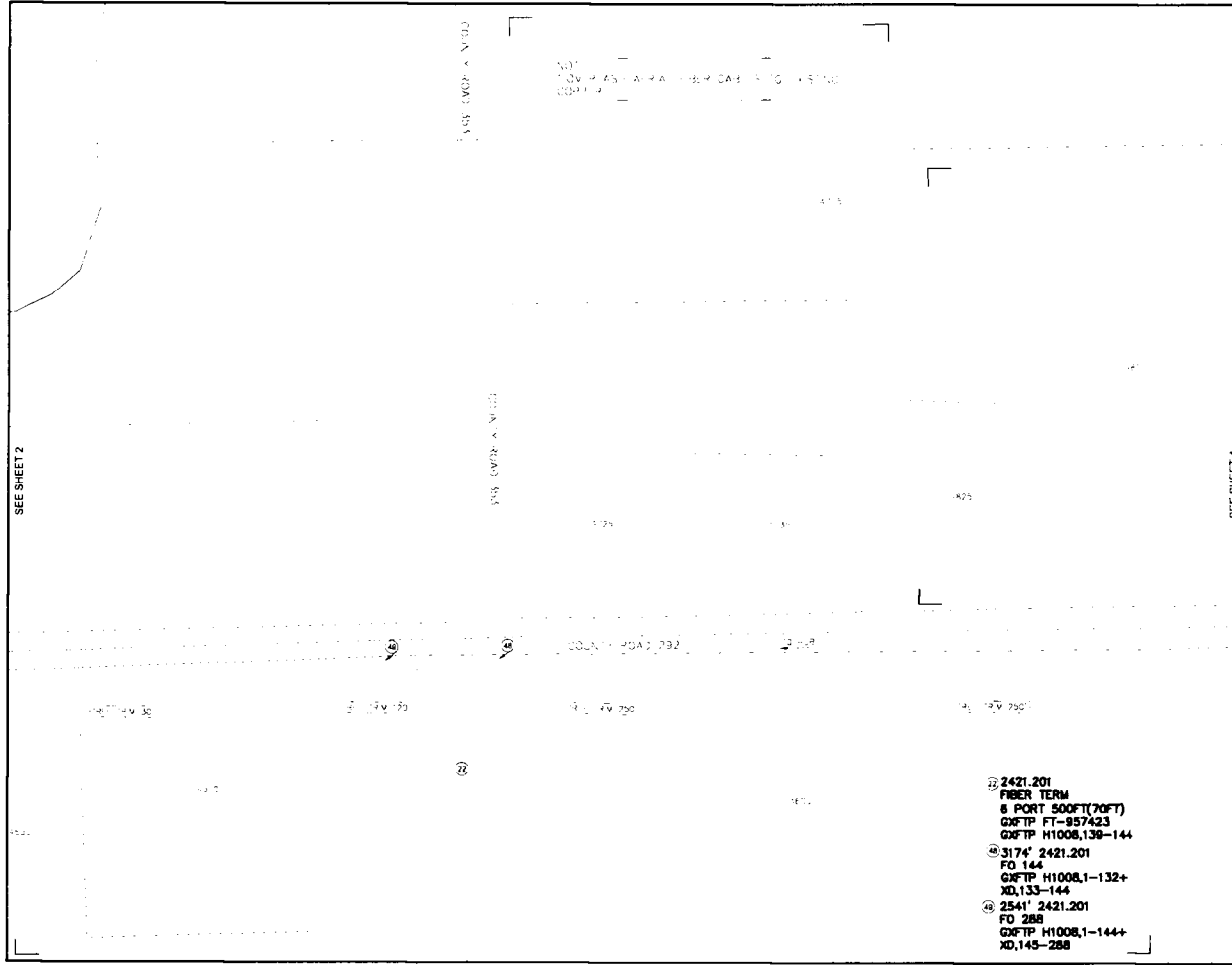
UNITS / ACCT CODES

FP015 2

REVISIONS

Frontier
COMMUNICATIONS
BROWNWOOD
FDH HUB H1008

PROJECT NUMBER 5297198 C.O. AREA BROWNWOOD
EXCH. CODE 70372
DRAWN DATE ENDR CLIENT CITY BROWN
07/25/2022 PHONE N/A FILE
SCALE 1"=100' TAX DISTRICT T0090 DWG 2 OF 28
TOWNSHIP RING SEC



SEE SHEET 2

CASE COVER A N 100

CASE COVER A N 100

SEE SHEET 4

2421.201 FIBER TERM 8 PORT 500FT(70FT)
 GFTF FT-957423
 GFTF H1008,138-144

2421.201
 FIBER TERM
 8 PORT 500FT(70FT)
 GFTF FT-957423
 GFTF H1008,138-144
 3174' 2421.201
 FO 144
 GFTF H1008,1-132+
 XD,133-144
 2541' 2421.201
 FO 288
 GFTF H1008,1-144+
 XD,145-288

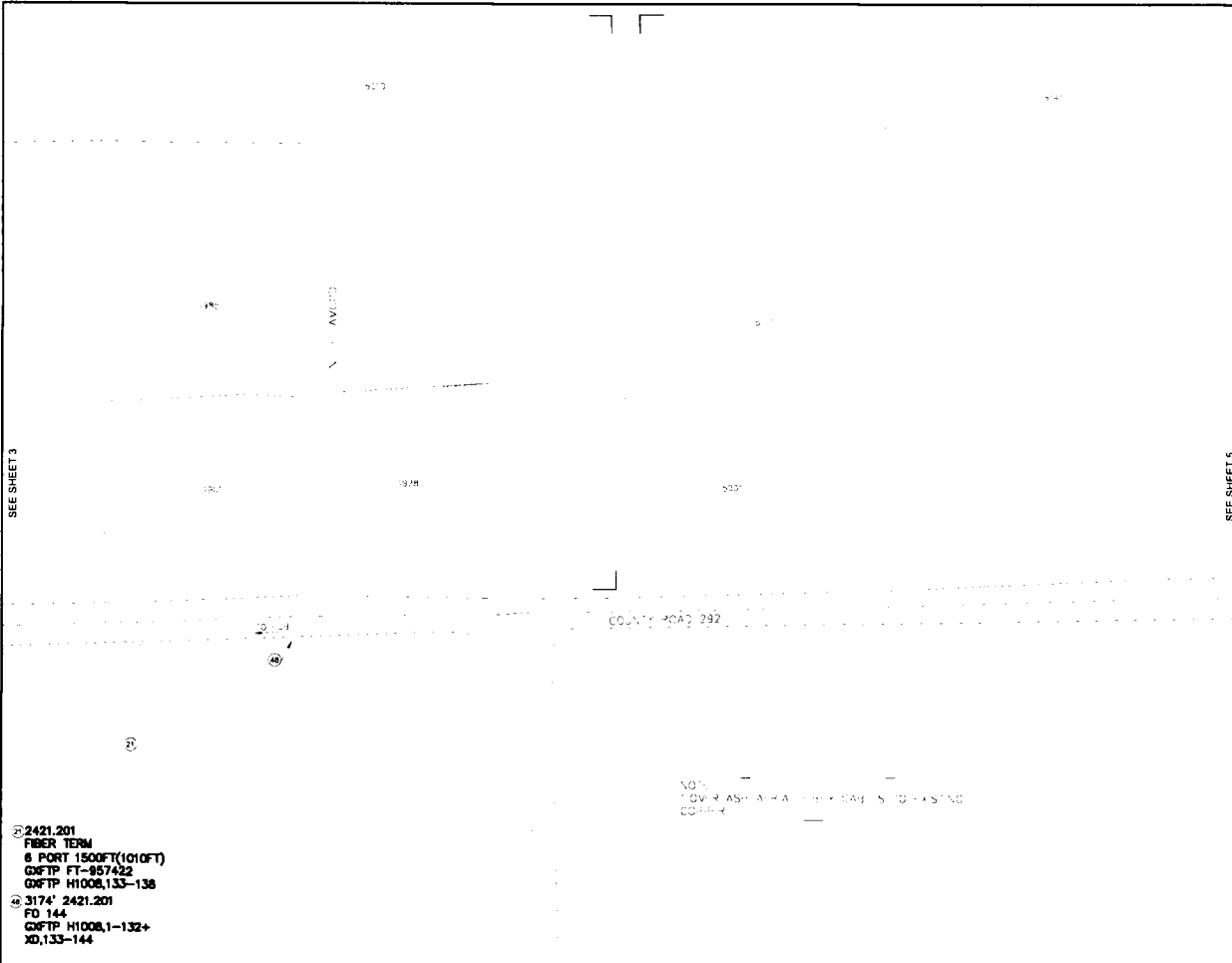
UNITS / ACCT CODES

UNIT	ACCT CODE
FP015	1
FP033A	1010
FP034A	70
FP22D	3174
FP47B	850
FS52	144
FS14	1

REVISIONS

Frontier
 COMMUNICATIONS
 BROWNWOOD
 FDH HUB H1008

PROJECT NUMBER 5297198
 C.O. AREA EXCH. CODE BROWNWOOD 70372
 DRAWN DATE ENGR CYENT CNTY BROWN
 07/25/2022 PHONE N/A FILE
 SCALE 1"=100' TAX DISTRICT T0090 DWG 3 OF 28
 TOWNSHIP RING SEC



SEE SHEET 3

SEE SHEET 5

2421.201
 FIBER TERM
 & PORT 1500FT(1010FT)
 Q&FTP FT-957422
 Q&FTP H1008,133-138
 3174' 2421.201
 FD 144
 Q&FTP H1008,1-132+
 XD,133-144

NOT
 TO SCALE
 COUNTY ROAD 292
 COUNTY ROAD 292

UNITS / ACCT CODES

FP015

REVISIONS

Frontier
 COMMUNICATIONS
 BROWNWOOD
 FDH HUB H1008

PROJECT NUMBER 5297198
 C.O. AREA BROWNWOOD
 EXCH. CODE 70372
 DRAWN DATE ENGR. CYENT. CNTY. BROWN
 07/25/2022 PHONE: N/A FILE:
 SCALE 1"=100' TAX DISTRICT: T0090 DWG 4 OF 28
 TOWNSHIP RING SEC.

SEE SHEET 6

NOT TO SCALE
OVERLAP AREA FOR DATA COLLECTION

CONCRETE

CONCRETE

COUNTY ROAD 792

SEE SHEET 4

SEE SHEET 7

UNITS / ACCT CODES

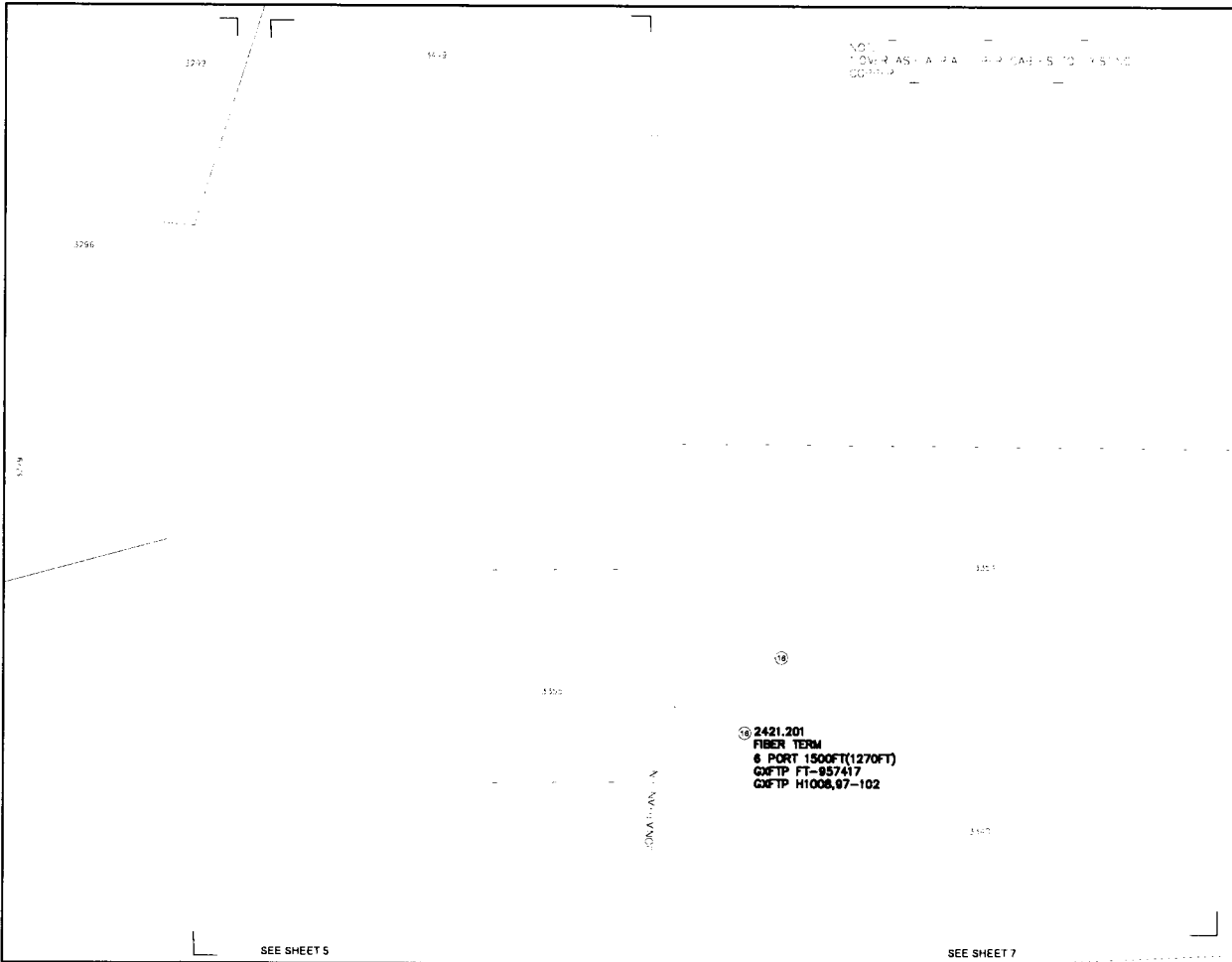
FP015	2
FP033A	465
FP034A	65
FP22D	1821
FP47B	750
FS50	12
FS14	1

REVISIONS

Frontier
COMMUNICATIONS
BROWNWOOD
FDH HUB H1008

PROJECT NUMBER 5297198
 C.O. AREA BROWNWOOD
 EXCH. CODE 70372
 DRAWN DATE 07/25/2022 ENGR. CYIENT CITY BROWN
 PHONE: N/A FILE
 SCALE: 1"=100' TAX DISTRICT: T0090 DWG 5 OF 28
 TOWNSHIP: RING SEC.

- ① 2421.201
FIBER TERM
6 PORT 1000FT(485FT)
GXFTP FT-837420
GXFTP H1008,121-126
- ② 1821' 2421.201
FO 144
GXFTP H1008,1-120+
XD,121-144
- ③ 2421.201
FIBER TERM
6 PORT 500FT(85FT)
GXFTP FT-837421
GXFTP H1008,127-132
- ④ 3174' 2421.201
FO 144
GXFTP H1008,1-132+
XD,133-144



NO. 1
 LOWER ASH LA PA - RIVER CREEK TO SYSTEM
 00111-2

16 2421.201
 FIBER TERM
 & PORT 1500FT(1270FT)
 GXFTP FT-957417
 GXFTP H1008,97-102

SEE SHEET 5

SEE SHEET 7

UNITS / ACCT CODES

FP015 1

REVISIONS

Frontier
 COMMUNICATIONS
 BROWNWOOD
 FDH HUB H1008

PROJECT 5297198 C.O. AREA BROWNWOOD
 NUMBER EXCH. CODE: 70372
 DRAWN DATE: ENGR. CLIENT: CXTY: BROWN
 07/25/0222 PHONE: N/A FILE
 SCALE: 1"=100' TAX DISTRICT: T0090 DWG 6 OF 28
 TOWNSHIP: RING SEC:

SEE SHEET 6

NO. 1
COUNTY ROAD 292

111

567

SEE SHEETS

JONATHAN LN

SEE SHEET 10

COUNTY ROAD 292

COUNTY ROAD 292

141-12V-292

90-19V-292

77-30

MI. CANYON BLVD.

SEE SHEET 8

UNITS / ACCT CODES

FP015	1
FP033A	1270
FP034A	1425
FP22D	3658
FP47B	400
FS52	114
FS14	1

REVISIONS

Frontier
COMMUNICATIONS
BROWNWOOD
FDH HUB H1008

PROJECT NUMBER 5297198
 C.O. AREA BROWNWOOD
 EXCH. CODE 70372
 DRAWN DATE ENGR. CLIENT CITY BROWN
 07/25/2022 PHONE: N/A FILE:
 SCALE: 1"=100' TAX DISTRICT: T0080 DWG 7 OF 28
 TOWNSHIP RING SEC

① 2421.201
 FIBER TERM
 8 POINT 1000FT(635FT)
 QXFIP FT-937418
 QXFIP H1008,103-108

④ 2635' 2421.201
 FO 98
 QXFIP H1008,1-84+
 XD,85-96

⑥ 1023' 2421.201
 FO 48
 QXFIP H1008,85-98+
 XD,13-48

⑦ 1821' 2421.201
 FO 144
 QXFIP H1008,1-120+
 XD,121-144

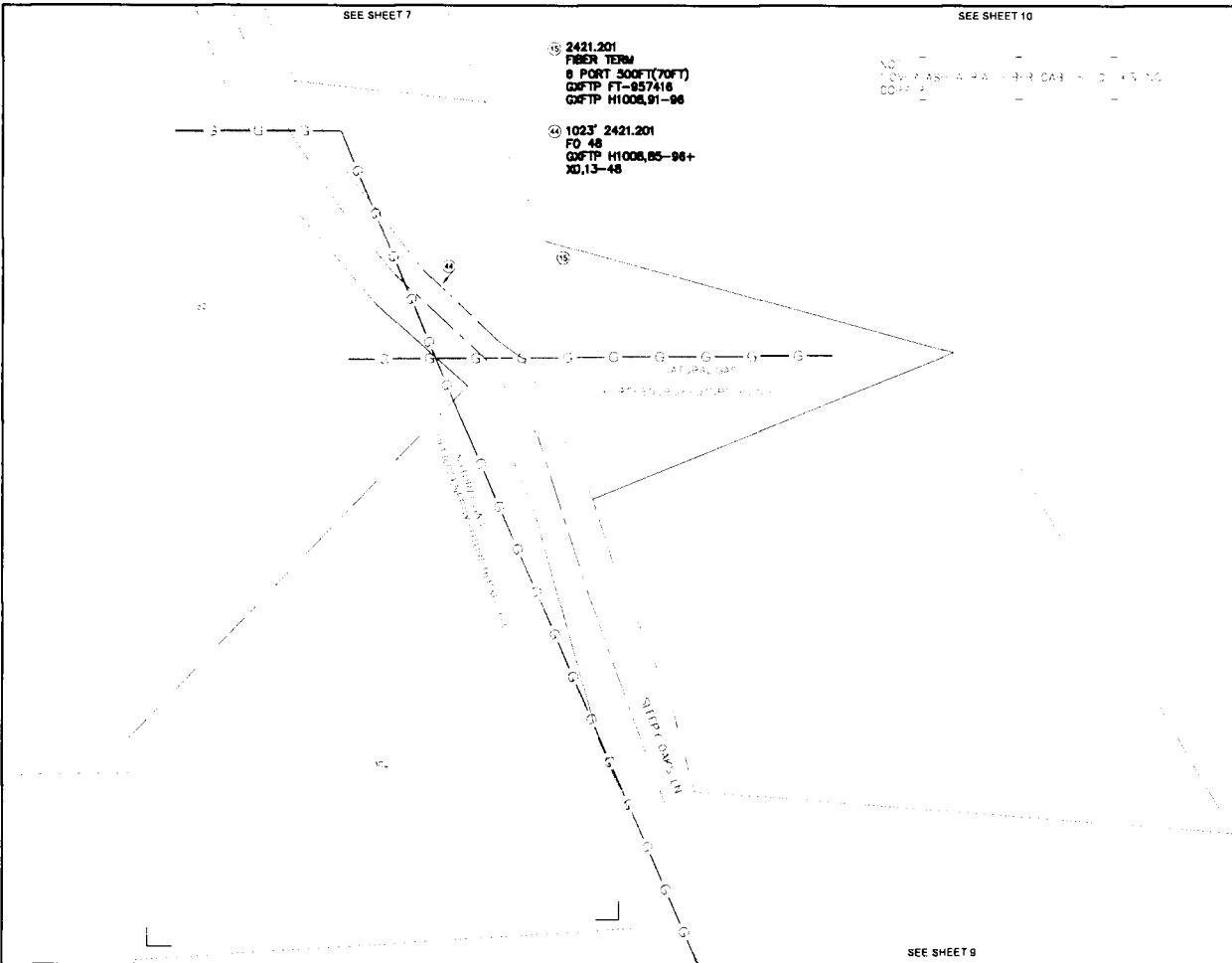
SEE SHEET 7

SEE SHEET 10

⑬ 2421.201
FIBER TRUNK
8 PORT 300FT (70FT)
C&F TP FT-857418
C&F TP H1008,91-98

⑭ 1023' 2421.201
FO 48
C&F TP H1008,85-98+
XD,13-48

NO. 1
CITY OF BROWNWOOD
COMMUNICATIONS



SEE SHEET 9

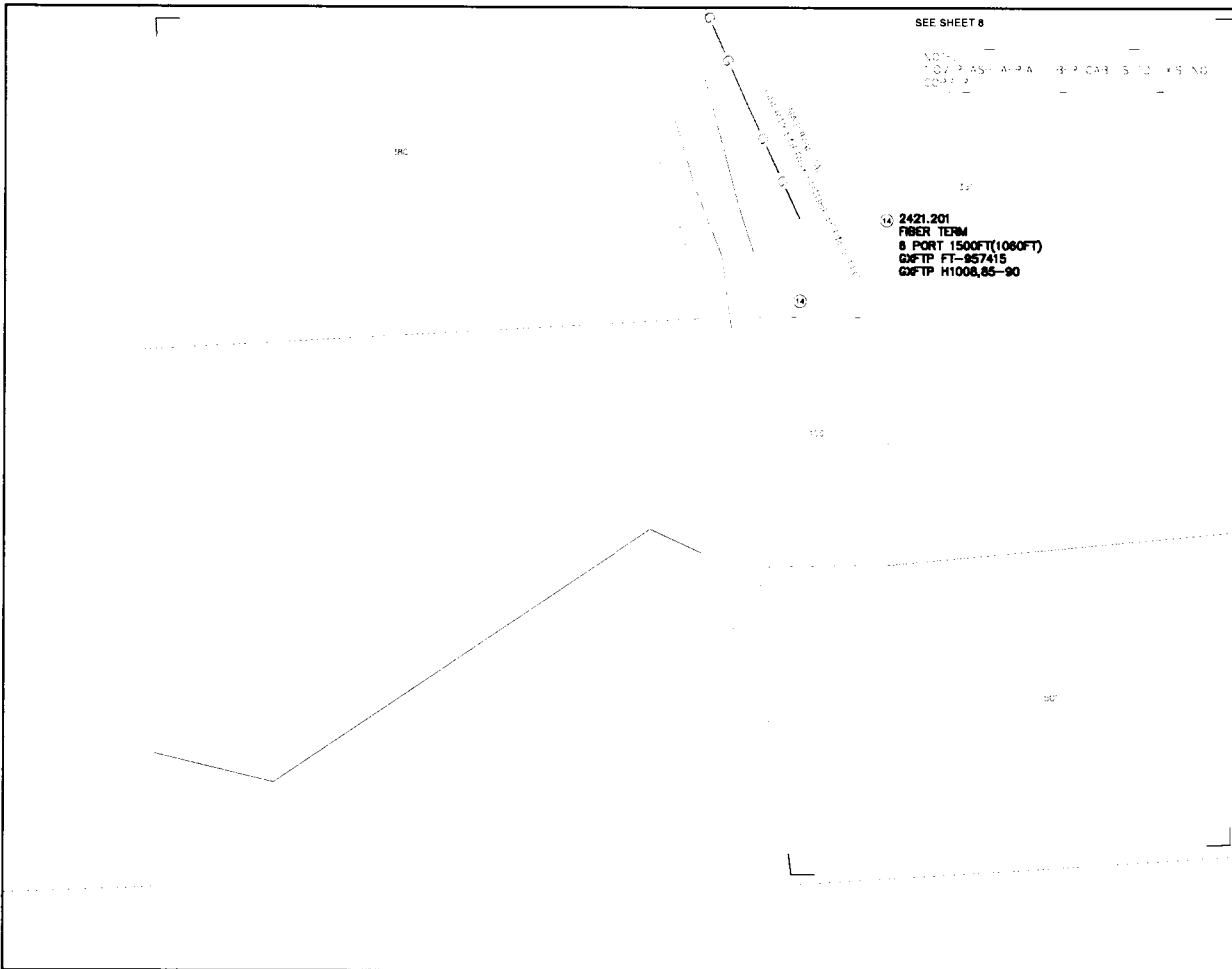
UNITS / ACCT CODES

FP015	1
FP033A	1060
FP034A	70
FS50	12
FS14	1

REVISIONS

Frontier
COMMUNICATIONS
BROWNWOOD
FDH HUB H1008

PROJECT NUMBER 5297198 C.O. AREA BROWNWOOD
 EXCH. CODE 70372
 DRAWN DATE ENGR. CLIENT COUNTY BROWN
 07/25/2022 PHONE N/A FILE
 SCALE 1"=100' TAX DISTRICT: 70090 DWG 8 OF 24
 TWP/SHR: RING SEC



SEE SHEET 8

NOT TO SCALE
CITY OF BROWNWOOD

2421.201
FIBER TERM
8 PORT 1500FT(1060FT)
GWFTP FT-957415
GWFTP H1008,85-90

UNITS / ACCT CODES

FP015

REVISIONS

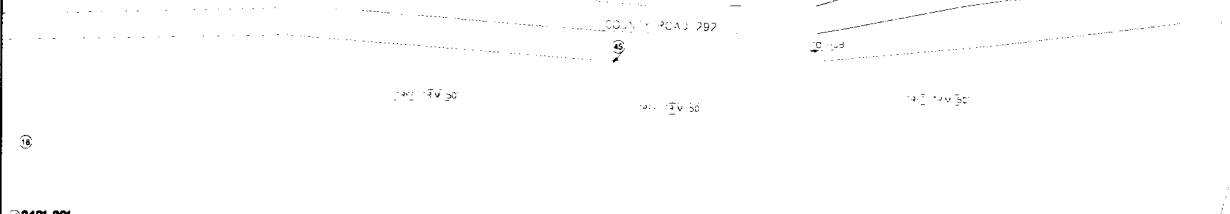
Frontier
COMMUNICATIONS
BROWNWOOD
FDH HUB H1008

PROJECT NUMBER 5297198 C.O. AREA BROWNWOOD
DRAIN DATE ENGR CYENT EXCH CODE 70372
07/25/2022 PHONE N/A CITY BROWN
SCALE: 1"=100' TAX DISTRICT: T0090 DWG 9 OF 28
TWNSHP RING SEC

NO
 COUNTY OF BROWNWOOD
 COUNTY OF BROWNWOOD
 NO
 COUNTY OF BROWNWOOD

SEE SHEET 7

SEE SHEET 11



2421.201
 FIBER TERM
 6 PORT 1000FT(770FT)
 GFTF FT-857419
 GFTF H1008,109-114
 2635 2421.201
 FD 96
 GFTF H1008,1-84+
 XD,85-96

SEE SHEET 8

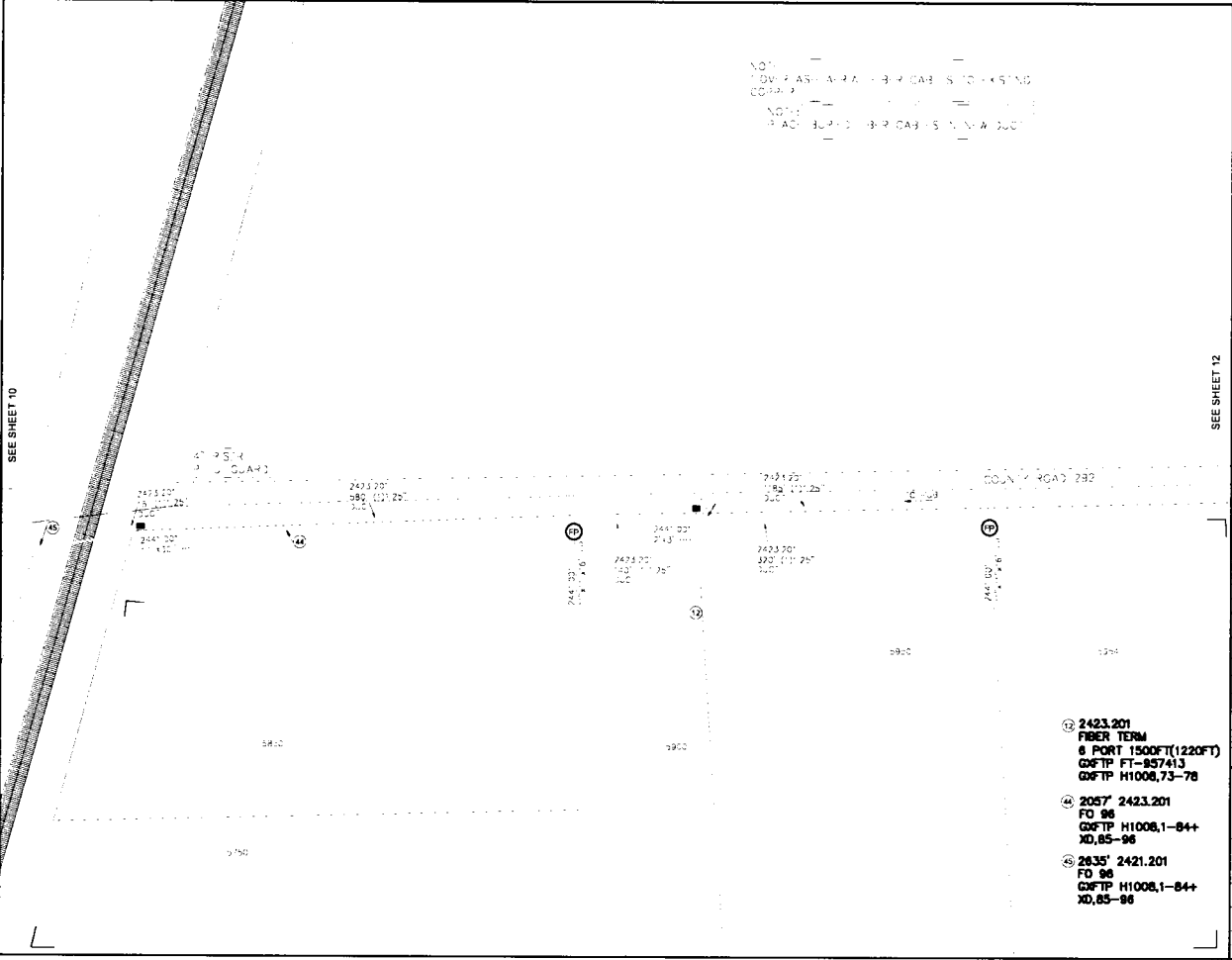
UNITS / ACCT CODES

FP015	7
FP479	150
FP588	1

REVISIONS

Frontier
 COMMUNICATIONS
 BROWNWOOD
 FDH HUB H1008

PROJECT NUMBER: 5297198 C.O. AREA: BROWNWOOD
 EXCH. CODE: 70372
 DRAWN DATE: ENGR: CLIENT: CNTY: BROWN
 07/25/2022 PHONE: N/A FILE
 SCALE: 1"=100' TAX DISTRICT: T0090 DWG: 10 OF 28
 TOWNSHIP: RNG: SEC:



NOTE: OVERPASS - A-PA - BRIDGE S TO HX STND
 COMPACT
 NOTE: ROAD - BRIDGE S - N - W - JCT

UNITS / ACCT CODES

FP58B	1
FP58A	2
FP017	1
FP58A	1320
FP58B	460
FP43F	2057

REVISIONS

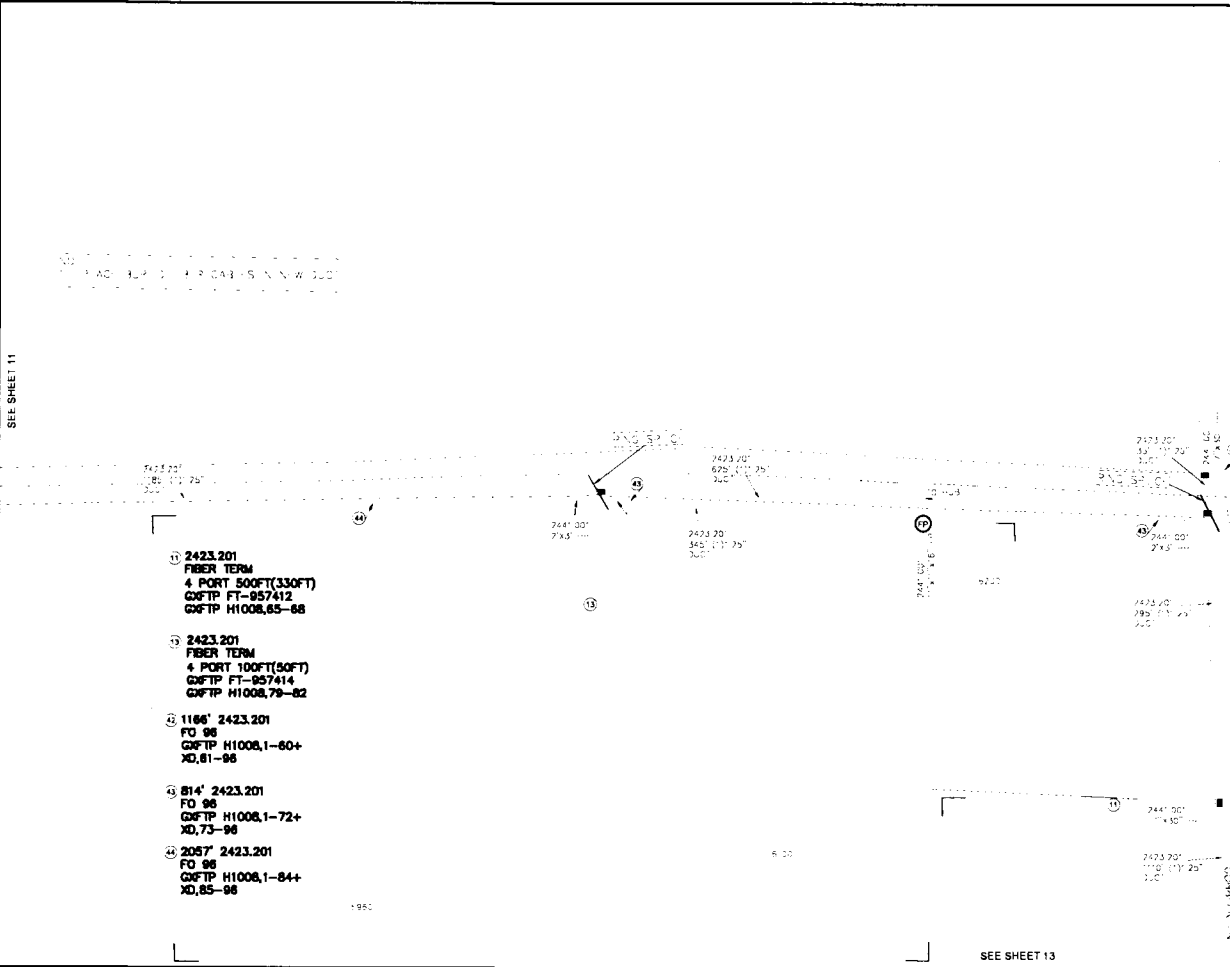
- ② 2423.201
FIBER TERM
8 PORT 1500FT(1220FT)
GXFTP FT-857413
GXFTP H1008,73-78
- ④ 2057 2423.201
FD 96
GXFTP H1008,1-84+
XD,85-96
- ⑤ 2421.201
FD 96
GXFTP H1008,1-84+
XD,85-96

Frontier
 COMMUNICATIONS
 BROWNWOOD
 FDH HUB H1008

PROJECT NUMBER 5297198
 CO. AREA BROWNWOOD
 EXCH. CODE 70372
 DRAWN DATE ENGR. CYRANT CTRY BROWN
 07/25/2022 PHONE: N/A FILE
 SCALE: 1"=100' TAX DISTRICT: T0090 DWG 11 OF 28
 TOWNSHIP: RING SEC

SEE SHEET 11

SEE SHEET 14



- ① 2423.201
FIBER TERM
4 PORT 500FT(330FT)
GWTP FT-957412
GWTP H1008,65-88
- ② 2423.201
FIBER TERM
4 PORT 100FT(50FT)
GWTP FT-957414
GWTP H1008,79-82
- ③ 1166' 2423.201
FO 96
GWTP H1008,1-60+
XD,61-98
- ④ 814' 2423.201
FO 96
GWTP H1008,1-72+
XD,73-98
- ⑤ 2057' 2423.201
FO 96
GWTP H1008,1-84+
XD,85-98

UNITS / ACCT CODES

FP588	4
FP58A	1
FP017	2
FP029	2670
FP032	380
FP43F	1980
FS50	1
FS14	1
FS50	8
FS14	1
FP59A	2775
FP59B	345

REVISIONS

Frontier
COMMUNICATIONS
BROWNWOOD
FDH HUB H1008

PROJECT NUMBER 5297198 C.O. AREA BROWNWOOD
 EXCH. CODE 70372
 DRAWN DATE ENGR. CLIENT CITY BROWN
 07/25/2022 PHONE: N/A FILE:
 SCALE 1"=100' TAX DISTRICT: T0090 DWG 12 OF 28
 TWSHP: RNG: SEC:

SEE SHEET 13

SEE SHEET 12

SEE SHEET 14

2423.201
11' x 33"

ADDITIONAL INFORMATION
SEE SHEET 14

⑩ 2423.201
FIBER TERM
4 PORT 1500FT(1450FT)
CONFID FT-987411
CONFID H1008,61-64

⑪ 2423.201
11' x 33"

2423.201
11' x 33"

⑫ 2423.201
11' x 33"

UNITS / ACCT CODES

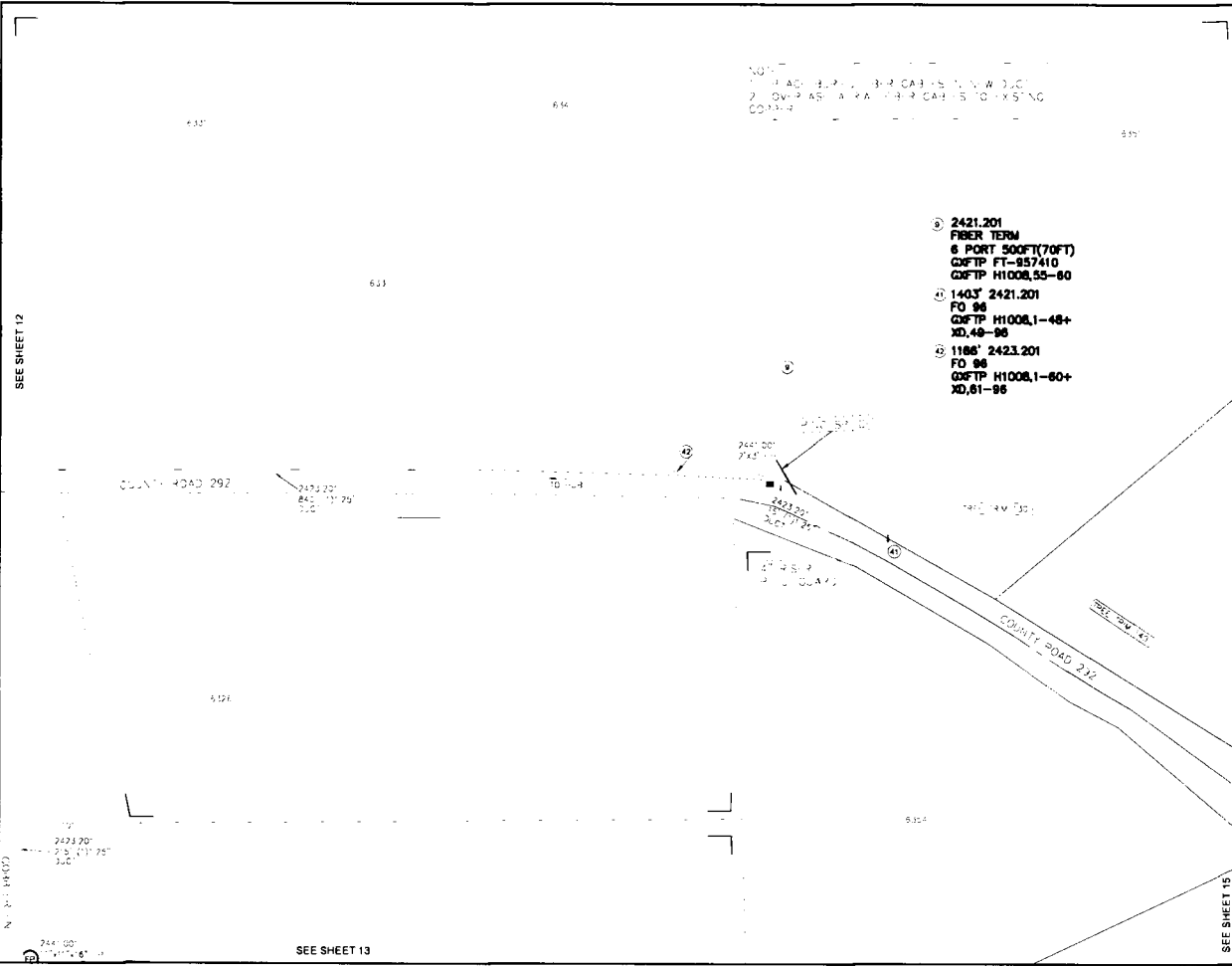
FP017	1
FP58A	1
FP58B	1
FP58A	15

REVISIONS

Frontier
COMMUNICATIONS
BROWNWOOD
FDH HUB H1008

PROJECT NUMBER: 5297198 C.O. AREA: BROWNWOOD
 DRAWN DATE: ENDR. EXCH. CODE: 70372
 07/25/2022 PHONE: N/A FILE: BROWN
 SCALE: 1=100 TAX DISTRICT: T0090 DWG. 13 OF 28
 TOWNSHIP: RING SEC.

NO. 1 ROAD 1/2" = 100' FOR CABLES IN VIEW SUBJECT TO OVERPASS AND OVER CABLES TO EXISTING COMPANY



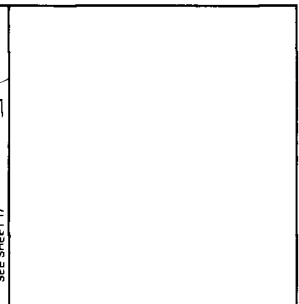
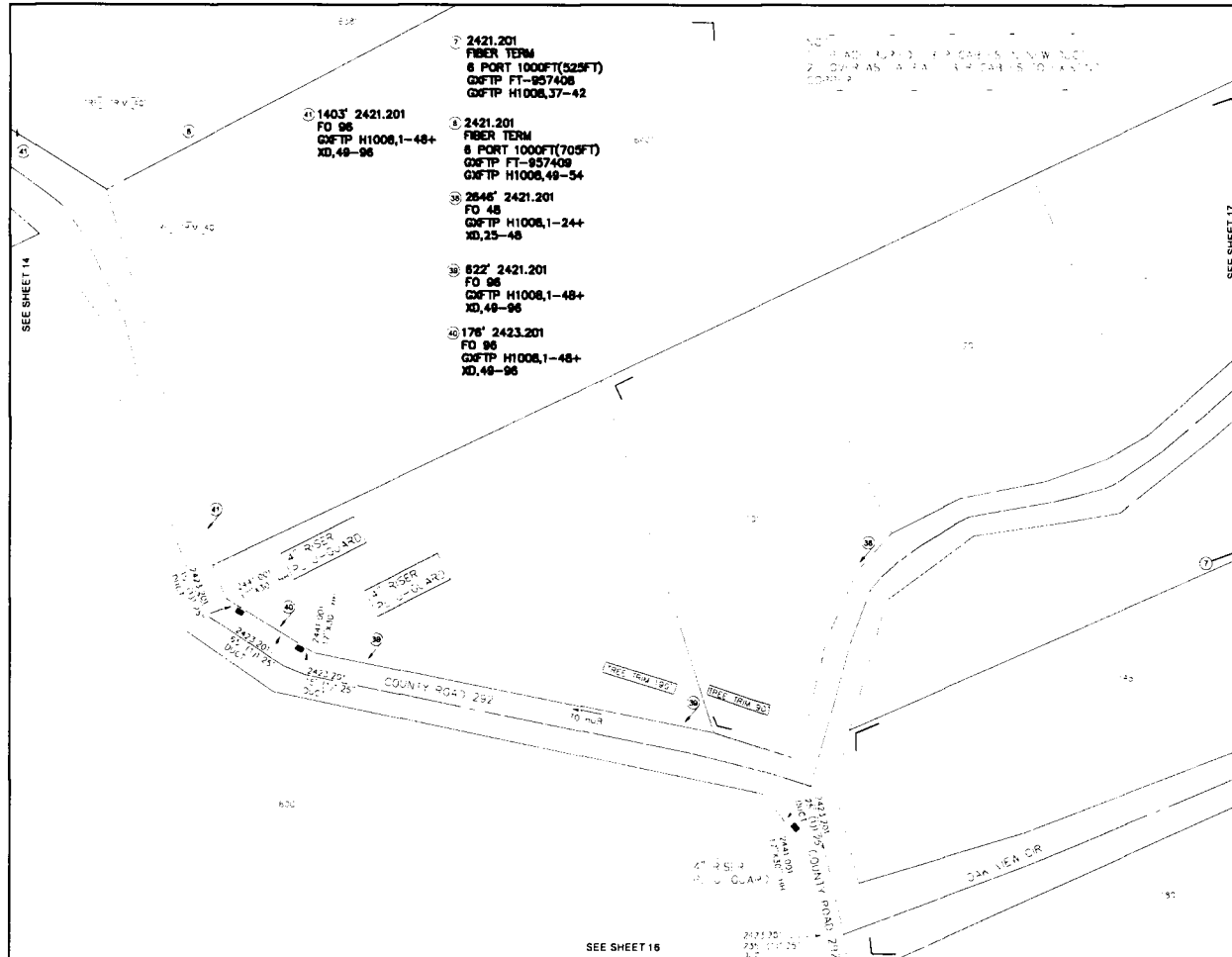
UNITS / ACCT CODES

FP58B	1
FP58A	1
FP015	1
FP033A	705
FP034A	70
FP22D	1403
FP47B	270
FS50	12
FS14	1
FP59A	15

REVISIONS

Frontier
COMMUNICATIONS
BROWNWOOD
FDH HUB H1008

PROJECT NUMBER: 5297198
C.O. AREA: BROWNWOOD
EXCH. CODE: 70372
DRAWN DATE: ENGR: CYIENT CITY: BROWN
07/25/2022 PHONE: N/A FILE:
SCALE: 1"=100' TAX DISTRICT: T0090 DWG: 14 OF 28
TWN5HP: RING SEC:



UNITS / ACCT CODES	
FP588	3
FP029	1045
FP015	2
FP033A	65
FP034A	1630
FP22D	3268
FS51	40
FS14	1
FP47B	360
FP43F	176
FP58A	355

REVISIONS	

Frontier
COMMUNICATIONS
BROWNWOOD
FDH HUB H1008

PROJECT NUMBER	5297198	C.O. AREA	BROWNWOOD
DRAWN BY	GATE ENGR	EXCH. CODE	70372
SCALE	1"=100'	CYENT	CNTY BROWN
TWN	1100	PHONE	N/A
TAX DISTRICT	T0080	FILE	
RNG		DWG	15 OF 28
SEC			

SEE SHEET 16

SEE SHEET 17

SEE SHEET 14

SEE SHEET 15

2423 201
FIBER TERM
4 PORT 1500FT(1140FT)
GXFTP FT-957406
GXFTP H1008,25-28

2423 201
FIBER TERM
4 PORT 1500FT(1140FT)
GXFTP FT-957406
GXFTP H1008,25-28

UNITS / ACCT CODES

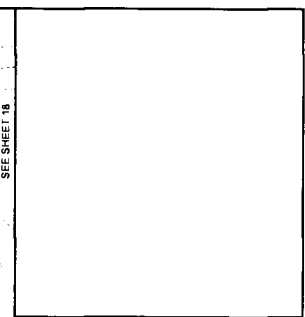
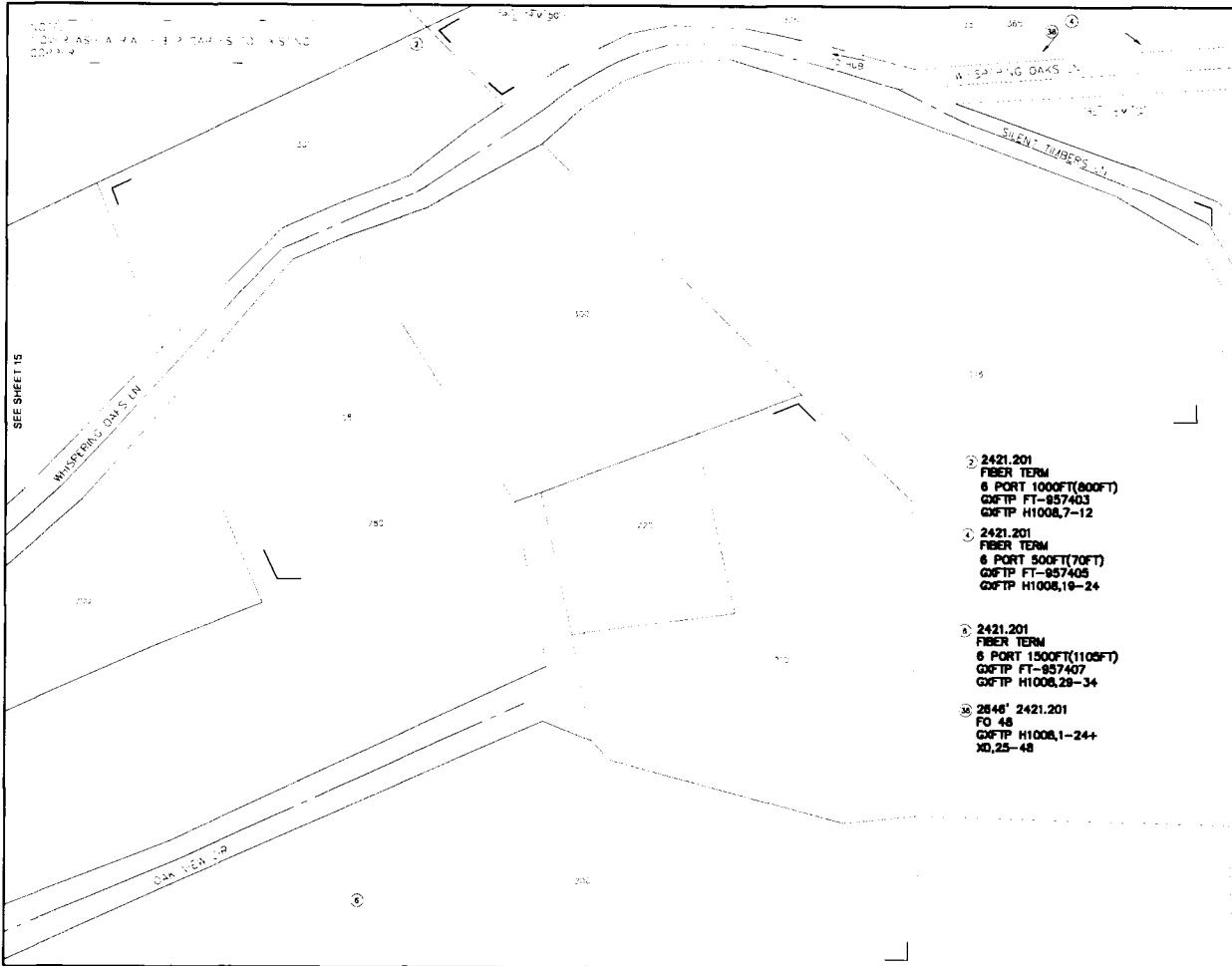
FP58B	2
FP58A	1
FP017	1
FP58A	1125

REVISIONS

Frontier
COMMUNICATIONS
BROWNWOOD

FDH HUB H1008

PROJECT NUMBER	5297198	C.O. AREA	BROWNWOOD
EXCH. CODE	70372	CITY	BROWN
DRAWN DATE	ENGR	CLIENT	PHONE: N/A
SCALE 1=100	TAX DISTRICT: T0080	DWG	16 OF 28
TWNESHIP: RNG		SEC.	



UNITS / ACCT CODES

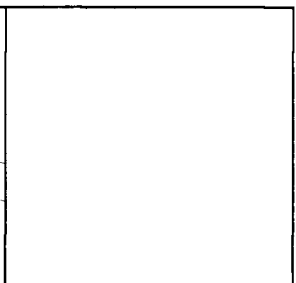
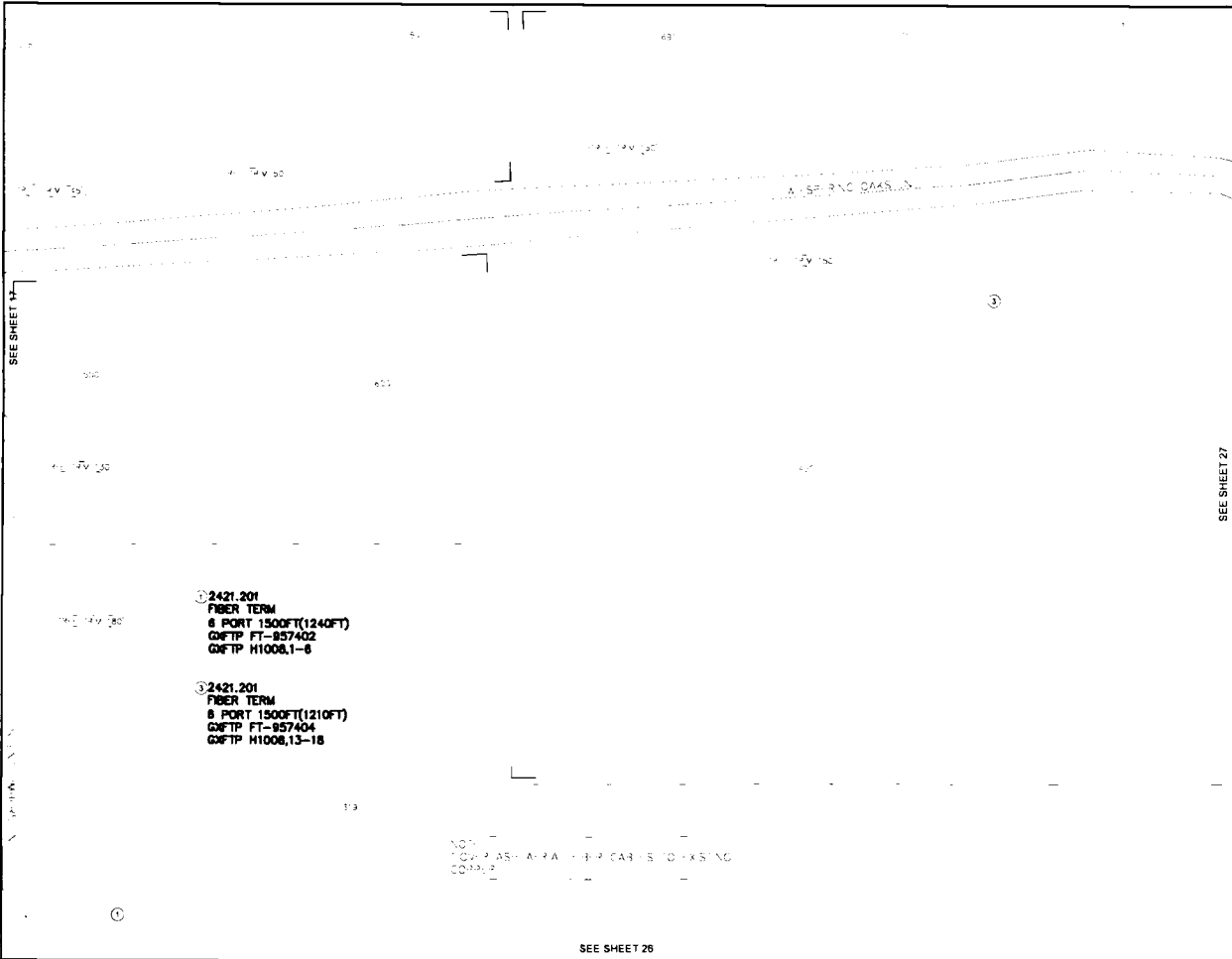
FR015	3
FR033A	1240
FR034A	2080
FR47B	120
FS51	24
FS14	1

REVISIONS

NO.	DATE	BY	DESCRIPTION

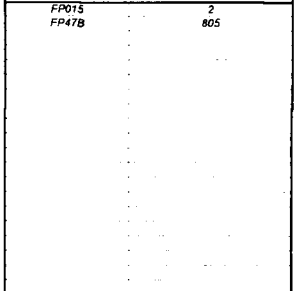
Frontier COMMUNICATIONS
BROWNWOOD
FDH HUB H1008

PROJECT NUMBER	5297198	C.O. AREA	BROWNWOOD
DRAWN DATE	ENGR	CLIENT	CATY BROWN
07/25/2022	PHONE	N/A	FILE
SCALE 1"=100'	TAX DISTRICT	T0080	DWG 17 OF 28
TOWNSHIP	RNG	SEC	



UNITS / ACCT CODES

FP015	2
FP47B	805



REVISIONS

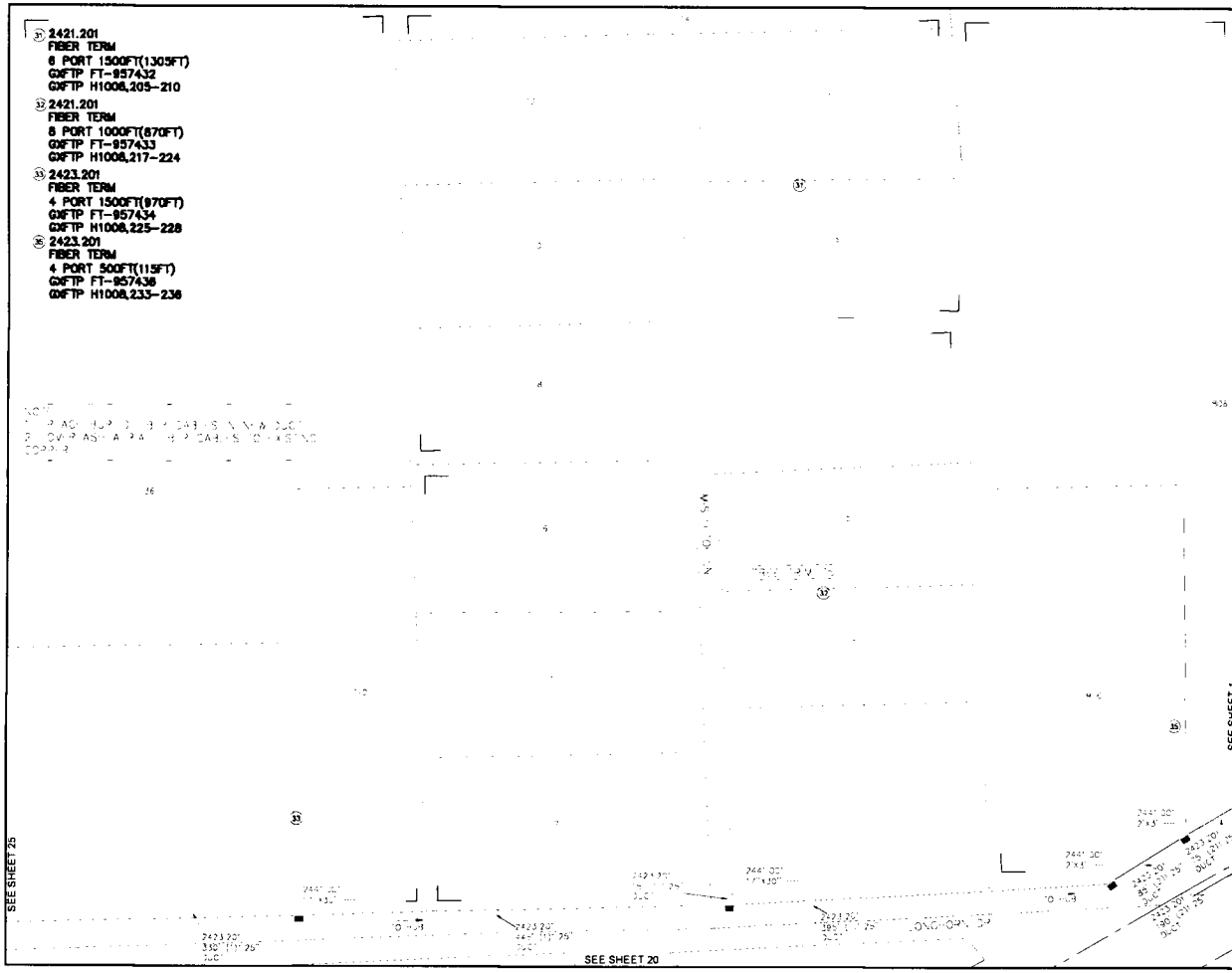
Frontier
COMMUNICATIONS
BROWNWOOD
FDH HUB H1008

PROJECT NUMBER: 5297198
 C.O. AREA: BROWNWOOD
 EXCH. CODE: 70372
 DRAIN DATE: ENGR: CYIENT CNTY: BROWN
 07/25/2022 PHONE: N/A FILE
 SCALE 1"=100' TAX DISTRICT: T0080 DWG 18 OF 28
 TOWNSHIP: RING SEC

SEE SHEET 28

- ⑤ 2421.201
FIBER TERM
8 PORT 1500FT(1305FT)
GWFTP FT-957432
GWFTP H1008,205-210
- ⑥ 2421.201
FIBER TERM
8 PORT 1000FT(870FT)
GWFTP FT-957433
GWFTP H1008,217-224
- ⑦ 2423.201
FIBER TERM
4 PORT 1500FT(870FT)
GWFTP FT-957434
GWFTP H1008,225-228
- ⑧ 2423.201
FIBER TERM
4 PORT 500FT(115FT)
GWFTP FT-957438
GWFTP H1008,233-236

NO. 1
P. A. C. H. U. B. 3. 4. 5. 6. 7. 8. 9. 10. 11. 12. 13. 14. 15. 16. 17. 18. 19. 20. 21. 22. 23. 24. 25. 26. 27. 28. 29. 30. 31. 32. 33. 34. 35. 36. 37. 38. 39. 40. 41. 42. 43. 44. 45. 46. 47. 48. 49. 50. 51. 52. 53. 54. 55. 56. 57. 58. 59. 60. 61. 62. 63. 64. 65. 66. 67. 68. 69. 70. 71. 72. 73. 74. 75. 76. 77. 78. 79. 80. 81. 82. 83. 84. 85. 86. 87. 88. 89. 90. 91. 92. 93. 94. 95. 96. 97. 98. 99. 100.



UNITS / ACCT CODES

FP58B	5
FP017	2
FP029	515
FP032	2450
FP015	2
FP033A	790
FP034A	360
FP47B	75
FP59A	1185
FP59B	85

REVISIONS

Frontier
COMMUNICATIONS
BROWNWOOD
FDH HUB H1008

PROJECT NUMBER 5297198 C.O. AREA BROWNWOOD
 EXCH. CODE 70372
 DRAWN DATE ENGR. CYIENT. CNTY. BROWN
 07/25/2022 PHONE: N/A FILE
 SCALE 1"=100' TAX DISTRICT: T0090 DWG 19 OF 28
 TOWNSHIP: RING SEC.

SEE SHEET 19

AS-A PA-1-B-R CA-1-S TO-KS-V-L

EARLY BLD

EARLY BLD

EARLY BLD 105-377-55-67-2148 FORTS TR.1

EARLY BLD 105-377-55-67-2148 FORTS TR.1

SEE SHEET 1

SEE SHEET 25

UNITS / ACCT CODES

FP015 2

REVISIONS

2421.201
FIBER TERM
6 PORT 1500FT(1305FT)
GXFTP FT-857437
GXFTP H1008,241-246

2421.201
FIBER TERM
6 PORT 1000FT(820FT)
GXFTP FT-857438
GXFTP H1008,247-252

Frontier
COMMUNICATIONS
BROWNWOOD
FDH HUB H1008

PROJECT NUMBER 5297198
C.O. AREA BROWNWOOD
EXCH. CODE 70372
DRAWN DATE ENGR. CYRINT. CITY BROWN
07/25/2022 PHONE N/A FILE
SCALE 1"=100' TAX DISTRICT T0090 DWG 20 OF 28
TOWNSHIP RING SEC.

SEE SHEET 1

SEE SHEET 2

NOT TO SCALE
LOW-PASS FILTER CASES TO BE USED
CROSS-SECTION

② 2745' 2421.201
FO 48
C&FTP H1008,145-168+
XD,25-48

② 2421.201
FIBER TERM
6 PORT 1000FT(810FT)
C&FTP FT-937428
C&FTP H1008,169-174

RD 111 W

SEE SHEET 22

UNITS / ACCT CODES

FP015 1

REVISIONS

Frontier
COMMUNICATIONS
BROWNWOOD
FDH HUB H1008

PROJECT NUMBER 5297198 C.O. AREA BROWNWOOD
EXCH. CODE 70372
DRAWN DATE ENGR. CYIENT CITY BROWN
07/25/2022 PHONE N/A FILE
SCALE: 1"=100' TAX DISTRICT T0090 DWG 21 OF 28
TWNSHRP RNG SEC

SEE SHEET 21

2421.201
FIBER TERM
6 PORT 500FT(70FT)
GXFTP FT-857427
GXFTP H1008,163-168

2421.201
FIBER TERM
6 PORT 1000FT(900FT)
GXFTP FT-857428
GXFTP H1008,157-162

2745 2421.201
FO 48
GXFTP H1008,145-168+
XD,25-48

WYOMING

SEE SHEET 23

UNITS / ACCT CODES

FP015	2
FP033A	1290
FP034A	1675
FS51	24
FS14	1

REVISIONS

Frontier
COMMUNICATIONS
BROWNWOOD
FDH HUB H1008

PROJECT NUMBER	5297198	C.O. AREA	BROWNWOOD
DRAWN DATE	07/25/2002	EXCH. CODE	70372
ENGR	N/A	CNTY	BROWN
PHONE	N/A	FILE	
TAX DISTRICT	T0080	DWG	22 OF 28
TOWNSHIP	RNG	SEC	

SEE SHEET 23

2421.201
FIBER TERM
6 PORT 1500FT(1280FT)
GXFTP FT-857424
GXFTP H1008,145-150

UNITS / ACCT CODES

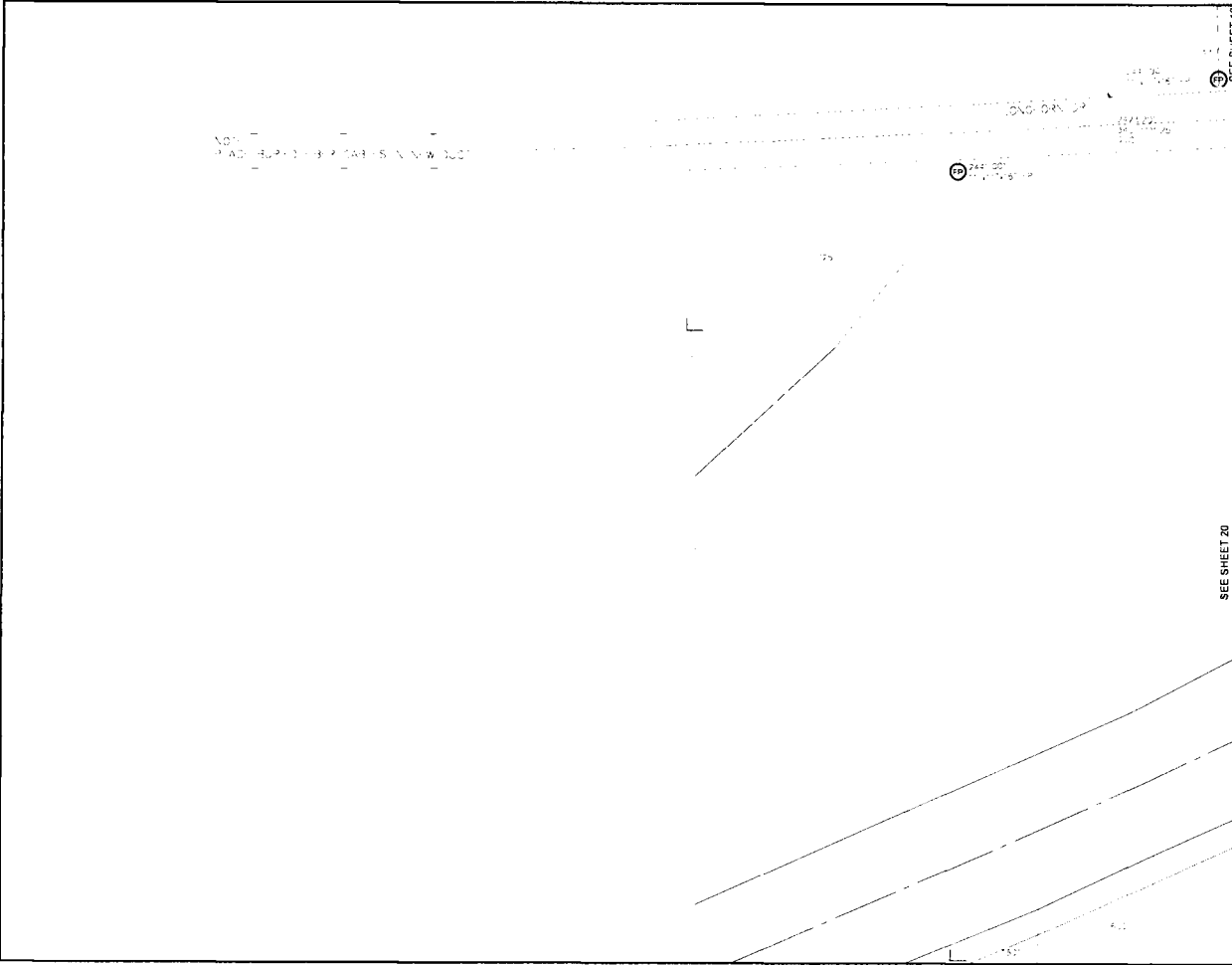
FP015 1

REVISIONS

NO. OF PALS AREA - 1000 CALIBER - 1000 FT. LONG
CABLE

Frontier
COMMUNICATIONS
BROWNWOOD
FDH HUB H1008

PROJECT NUMBER 5297198 C.O. AREA BROWNWOOD
EXCH. CODE 70372
DRAWN DATE ENGR. CLIENT CITY BROWN
07/25/2022 PHONE N/A FILE
SCALE 1"=100' TAX DISTRICT T0090 DWG 24 OF 28
TOWNSHIP RING SEC



SEE SHEET 19

SEE SHEET 20

UNITS / ACCT CODES

FP58A	2
FP58A	340

REVISIONS

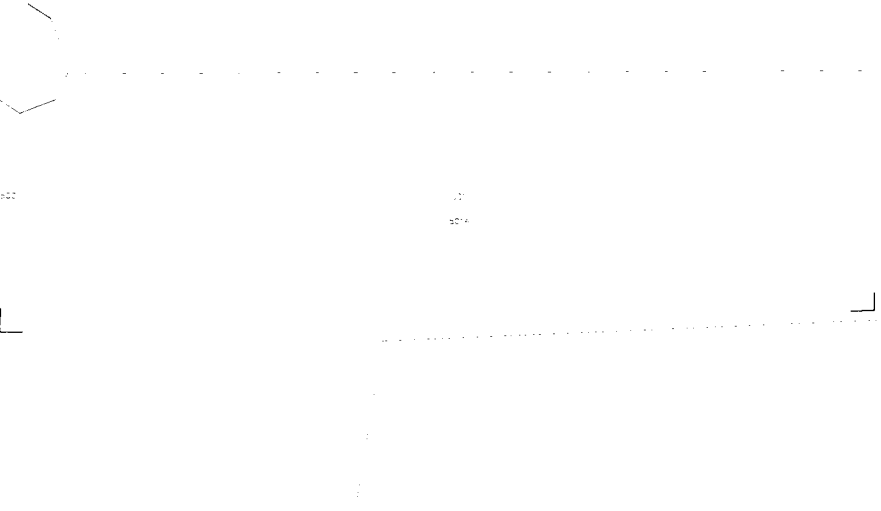
Frontier
 COMMUNICATIONS
 BROWNWOOD
 FDH HUB H1008

PROJECT NUMBER 5297198 C.O. AREA BROWNWOOD
 EXCH. CODE 70372
 DRAWN DATE ENBR CYRINT CNTY BROWN
 07/25/2022 PHONE N/A FILE
 SCALE 1"=100' TAX DISTRICT T0090 DWG 25 OF 28
 TOWNSHIP RING SEC

SEE SHEET 18

SEE SHEET 17

N 1/2 S 34 W

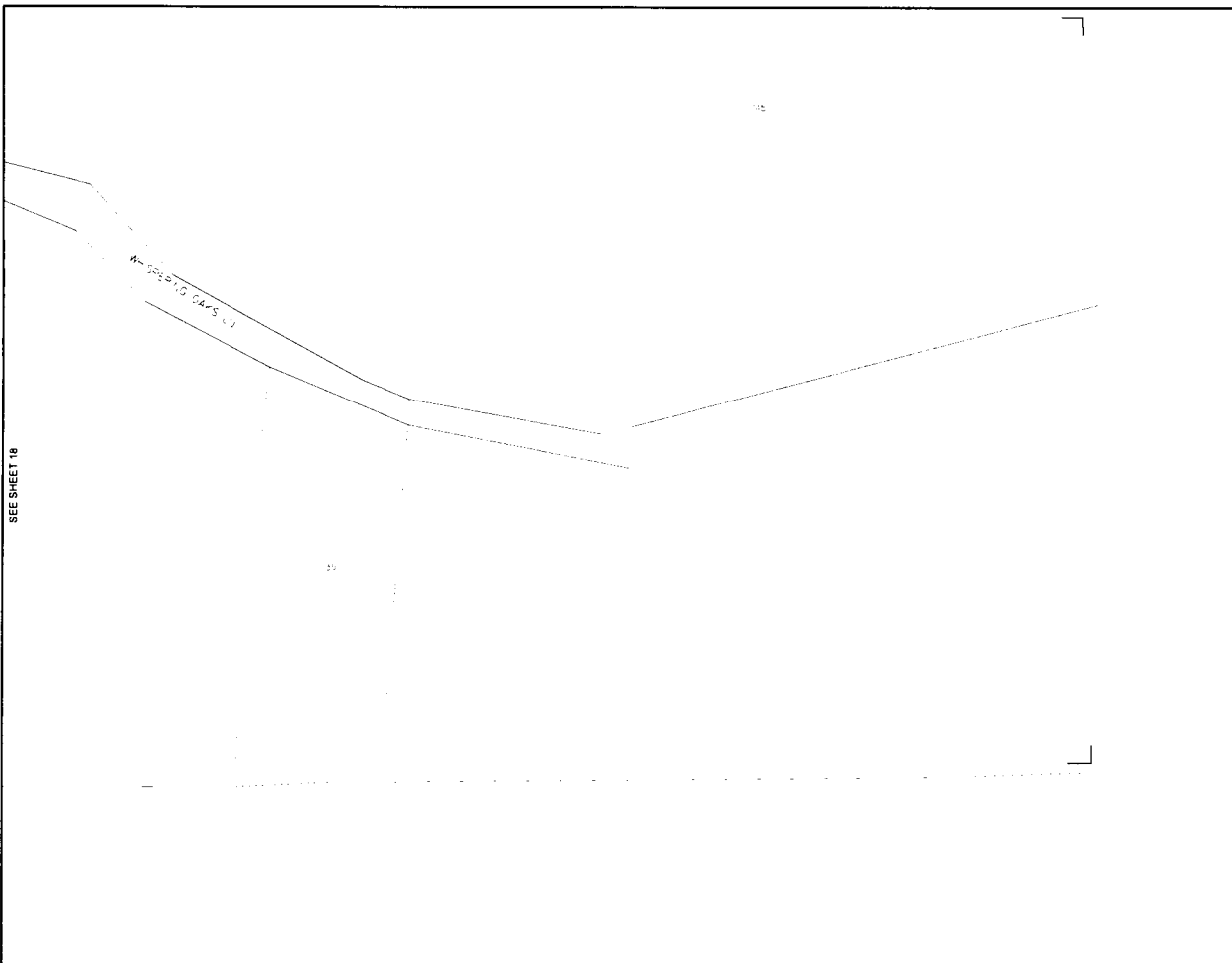


UNITS / ACCT CODES

REVISIONS

Frontier
 COMMUNICATIONS
 BROWNWOOD
 FDH HUB H1008

PROJECT NUMBER: 5297198 C.O. AREA: BROWNWOOD
 EXCH. CODE: 70372
 DRAWN DATE: ENGR: CYBERT CNTY: BROWN
 07/25/2022 PHONE: N/A FILE:
 SCALE: 1"=100' TAX DISTRICT: T0090 DWG: 26 OF 28
 TOWNSHIP: RING: SEC:



SEE SHEET 18

--

UNITS / ACCT CODES

--

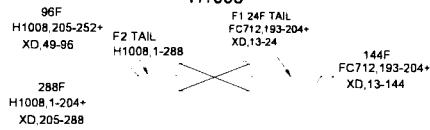
REVISIONS

--	--

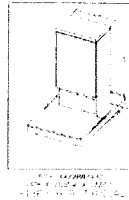
Frontier
 COMMUNICATIONS
 BROWNWOOD
 FDH HUB H1008

PROJECT	5297198	C.O. AREA	BROWNWOOD
NUMBER		EXCH. CODE	70372
DRAWN DATE	ENGR	CYIENT	DRY
07/25/2022	PHONE: N/A	FILE	BROWN
SCALE 1"=100'	TAX DISTRICT: T0090	DWG	27 OF 28
TWNSHIP	RNG	SEC	

**288 FDH SPLICE DETAIL
H1008**



70372-5297198
101 JENKINS SPRING RD
H1008(288)
SPLITTERS 1 32



SPLITTER IN FC712, 193-193
OUT H1008A, 1-32

IN FC712, 194-194
OUT H1008B, 1-32

IN FC712, 195-195
OUT H1008C, 1-32

HUB IN H1008A, 1-32
IN H1008B, 1-32
IN H1008C, 1-32
IN XD, 13-24
IN FC712, 193-204+
OUT H1008, 1-288

PROPOSED FDH LOCATION
101, JENKINS SPRING RD, BROWNWOOD, TX 70372

HUB ID H1008
MATERIAL CODE F3H-1G288UE
MANUFACTURER COMMSCOPE
TYPE FDH CABINET 24268 TYP PAD GEN 3
IN H1008A, 1-32
IN H1008B, 1-32
IN H1008C, 1-32
IN XD, 13-24
IN FC712, 193-204+
OUT H1008, 1-288

SPLITTER ID H1008A
MATERIAL CODE FPS-G2LPP1AJ
MANUFACTURER COMMSCOPE
TYPE 1 32 SPLITTER GEN 3
IN FC712, 193-193
OUT H1008A, 1-32

SPLITTER ID H1008B
MATERIAL CODE FPS-G2LPP1AJ
MANUFACTURER COMMSCOPE
TYPE 1 32 SPLITTER GEN 3
IN FC712, 194-194
OUT H1008B, 1-32

SPLITTER ID H1008C
MATERIAL CODE FPS-G2LPP1AJ
MANUFACTURER COMMSCOPE
TYPE 1 32 SPLITTER GEN 3
IN FC712, 195-195
OUT H1008C, 1-32

FDH
H1008

UNITS ENGINEERED
LU'S(ACTUAL) 176
LU'S(FUTURE)
MU'S(ACTUAL)
MU'S(FUTURE)
BU'S(ACTUAL)
BU'S(FUTURE)

FIBER INFO FOR THE LONGEST
FIBER SERVED BY THIS FDH

CABLE #	FEEDER	DISTRIBUTION	TOTAL OF FEEDER & DISTRIBUTION	
			FEEDER	DISTRIBUTION
193	FC712	H1008	11	44.085KFT
6	193	11	17.265KFT	
SPICES		6	11	16
LENGTH		25.770KFT	17.265KFT	44.085KFT

REVISIONS

Frontier
COMMUNICATIONS
BROWNWOOD
FDH HUB H1008

PROJECT NUMBER: 5297198 C.G. AREA: BROWNWOOD
DRAWN DATE: ENDR CYRINT CRTY: BROWN
07/25/2022 PHONE: N/A FILE:
SCALE: 1=100 TAX DISTRICT: T0090 DWG: 27 OF 28
TWNNSHP: RNG. SEC.

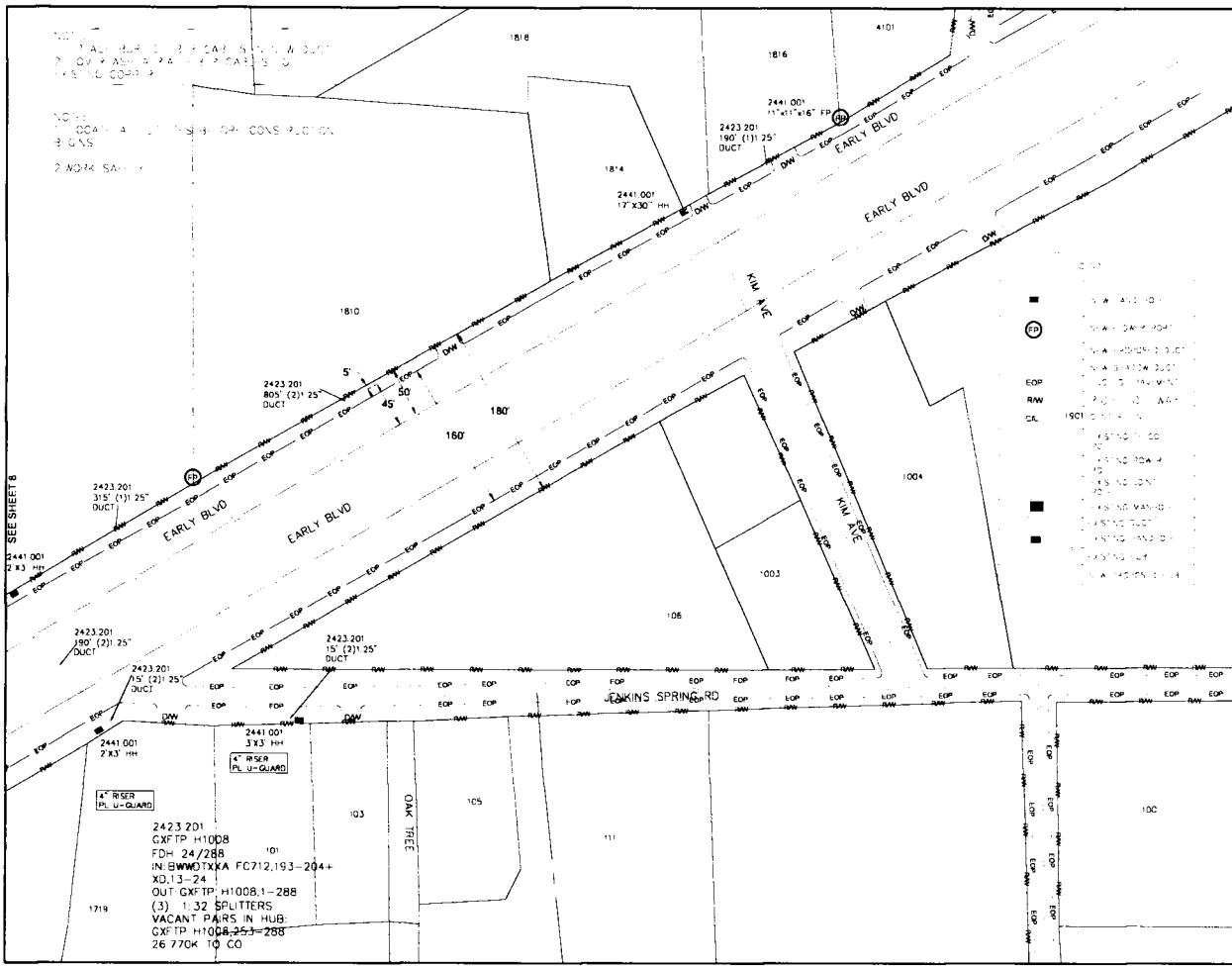


REVISIONS

Frontier
COMMUNICATIONS
BROWNWOOD

FDH H1008 CONDUIT DRAWING

PROJECT NUMBER	5297198	C.O. AREA	BROWNWOOD
DRAWN DATE	ENGR	EXCH. CODE	70372
07/26/2022	PHONE: N/A	CITY	BROWN
SCALE: 1"=100'	TAX DISTRICT: T0090	FILE	
TWNSHIP	RNG:	DWG	OF
		SEC.	

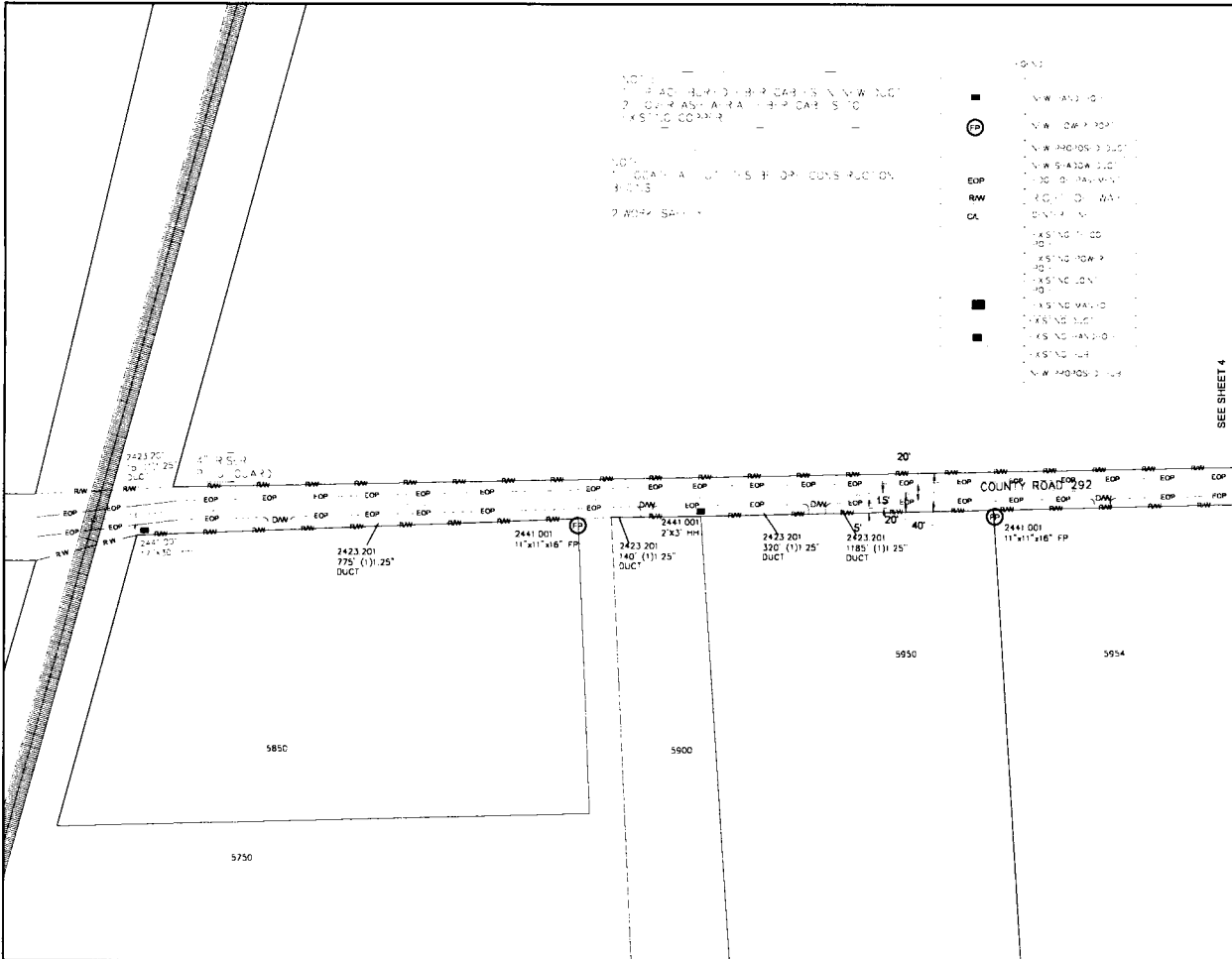


- EXISTING CONDUIT
- NEW CONDUIT
- EXISTING DUCT
- NEW DUCT
- EXISTING Riser
- NEW Riser
- EXISTING Riser Guard
- NEW Riser Guard
- EXISTING EOP
- NEW EOP
- EXISTING RW
- NEW RW
- EXISTING CA
- NEW CA

REVISIONS

Frontier
 COMMUNICATIONS
 BROWNWOOD
 FDH H1008 CONDUIT DRAWING

PROJECT NUMBER	5297198	C.O. AREA	BROWNWOOD
EXCH. CODE	70372	CITY	BROWNWOOD
DATE ENGR.	07/26/2022	PHONE	N/A
TAX DISTRICT	10090	FILE	
TOWNSHIP	RNG	SEC	1 OF 10



SEE SHEET 4

REVISIONS	

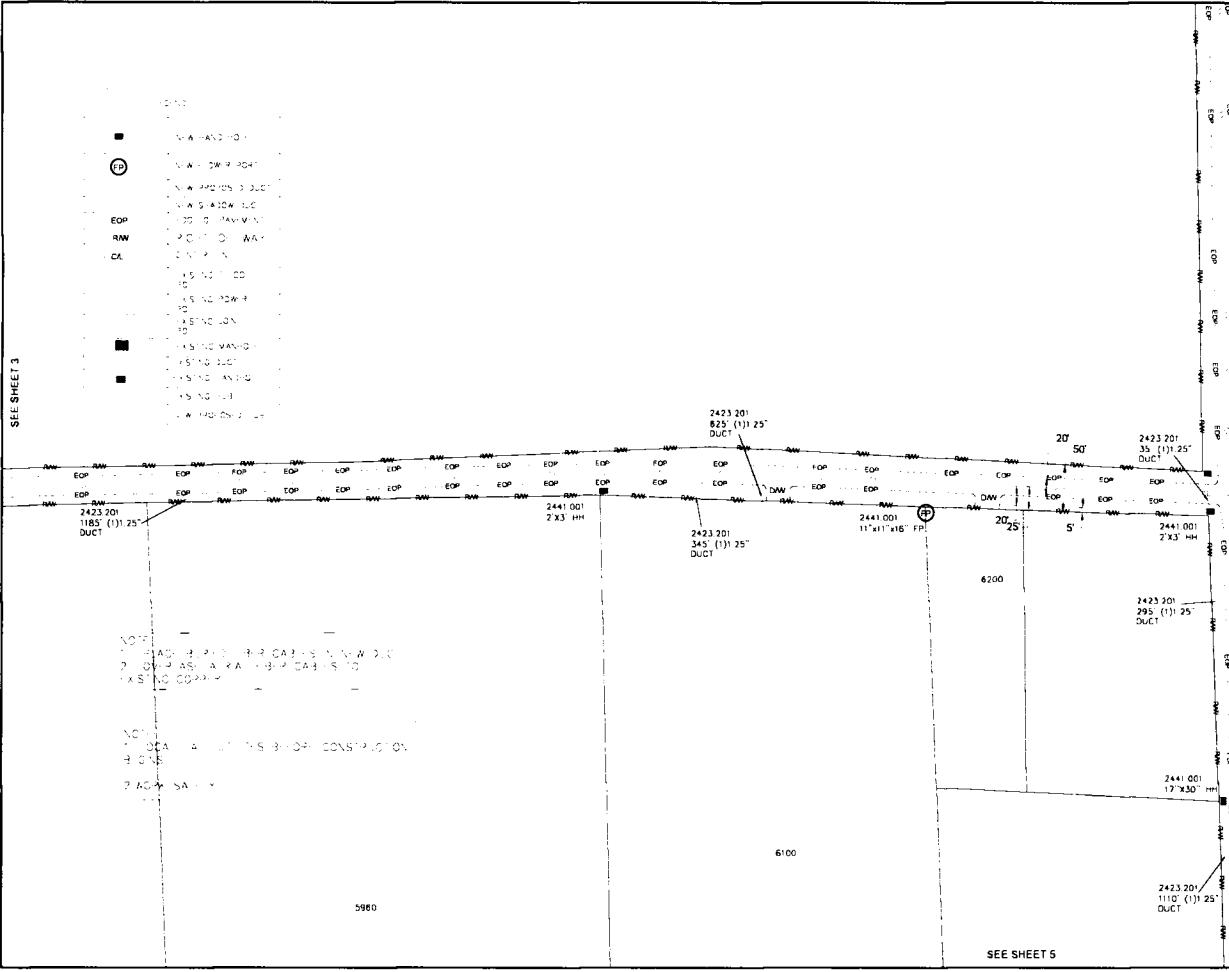
Frontier
COMMUNICATIONS
BROWNWOOD

FDH H1008 CONDUIT DRAWING

PROJECT NUMBER	5297198	C.O. AREA	BROWNWOOD
EXCH. CODE	70372	CNTY	BROWN
DATE	03/21/2022	PHONE	N/A
ENGR	CYIENT	FILE	
SCALE	1"=100'	TAX DISTRICT	T0090
DWG	2	OF	10
TWNSHP	RNG	SEC	

SEE SHEET 3

- NEW HAND HOLE
- NEW DOW HOLE
- NEW PAVEN 2 DUCT
- NEW PAVEN 3 DUCT
- NEW PAVEN 4 DUCT
- NEW PAVEN 5 DUCT
- NEW PAVEN 6 DUCT
- NEW PAVEN 7 DUCT
- NEW PAVEN 8 DUCT
- NEW PAVEN 9 DUCT
- NEW PAVEN 10 DUCT
- NEW PAVEN 11 DUCT
- NEW PAVEN 12 DUCT
- NEW PAVEN 13 DUCT
- NEW PAVEN 14 DUCT
- NEW PAVEN 15 DUCT
- NEW PAVEN 16 DUCT
- NEW PAVEN 17 DUCT
- NEW PAVEN 18 DUCT
- NEW PAVEN 19 DUCT
- NEW PAVEN 20 DUCT
- NEW PAVEN 21 DUCT
- NEW PAVEN 22 DUCT
- NEW PAVEN 23 DUCT
- NEW PAVEN 24 DUCT
- NEW PAVEN 25 DUCT
- NEW PAVEN 26 DUCT
- NEW PAVEN 27 DUCT
- NEW PAVEN 28 DUCT
- NEW PAVEN 29 DUCT
- NEW PAVEN 30 DUCT
- NEW PAVEN 31 DUCT
- NEW PAVEN 32 DUCT
- NEW PAVEN 33 DUCT
- NEW PAVEN 34 DUCT
- NEW PAVEN 35 DUCT
- NEW PAVEN 36 DUCT
- NEW PAVEN 37 DUCT
- NEW PAVEN 38 DUCT
- NEW PAVEN 39 DUCT
- NEW PAVEN 40 DUCT
- NEW PAVEN 41 DUCT
- NEW PAVEN 42 DUCT
- NEW PAVEN 43 DUCT
- NEW PAVEN 44 DUCT
- NEW PAVEN 45 DUCT
- NEW PAVEN 46 DUCT
- NEW PAVEN 47 DUCT
- NEW PAVEN 48 DUCT
- NEW PAVEN 49 DUCT
- NEW PAVEN 50 DUCT



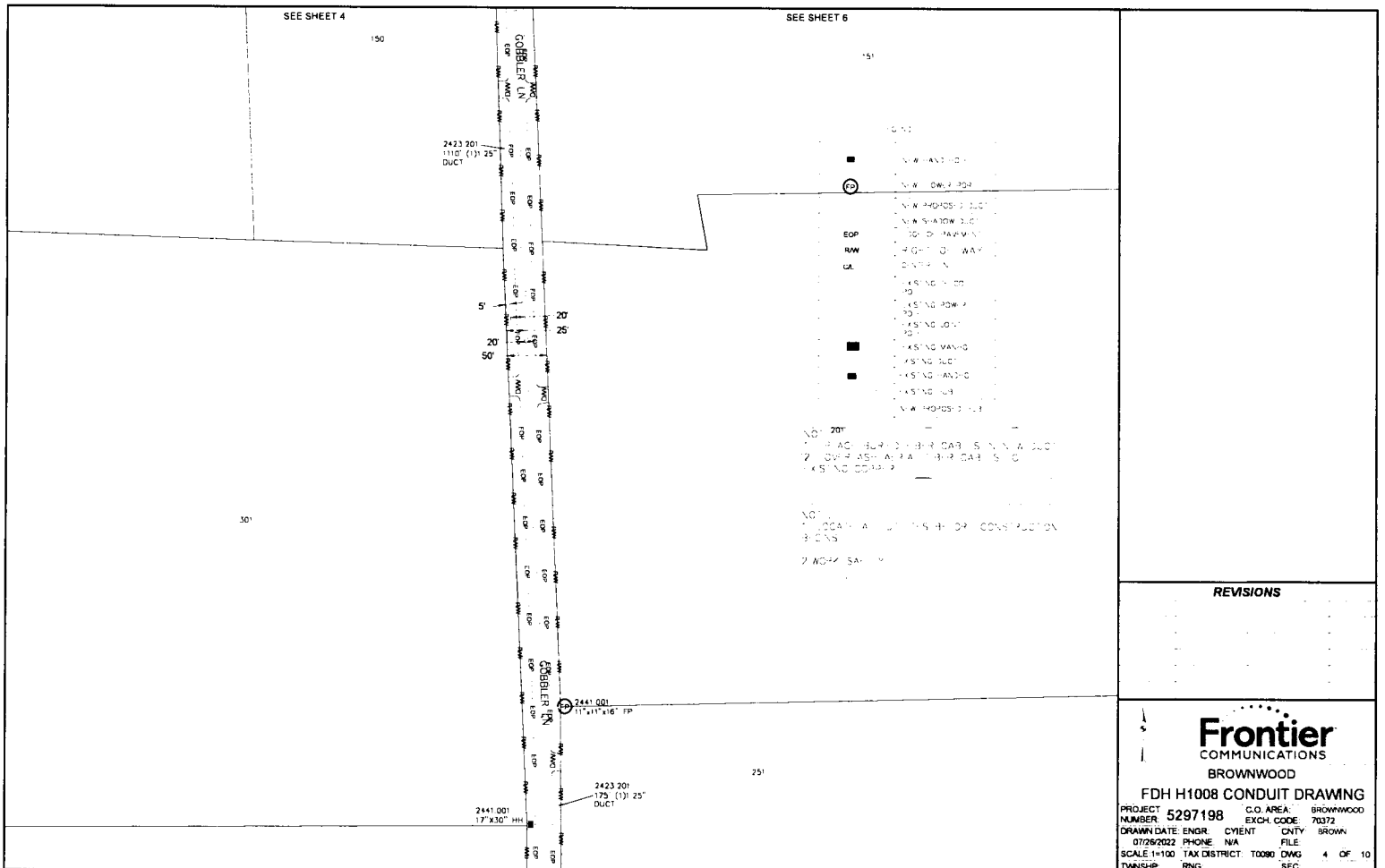
REVISIONS

Frontier
COMMUNICATIONS
 BROWNWOOD

FDH H1008 CONDUIT DRAWING

PROJECT NUMBER	5297198	C.O. AREA	BROWNWOOD
DRAWN DATE	07/26/2022	EXCH. CODE	70372
ENGR.	PHONE NA	CITY	BROWN
SCALE 1=100	TAX DISTRICT	FILE	
TWNSHIP	RNG	T0090 DWG	3 OF 10
		SEC	

SEE SHEET 5

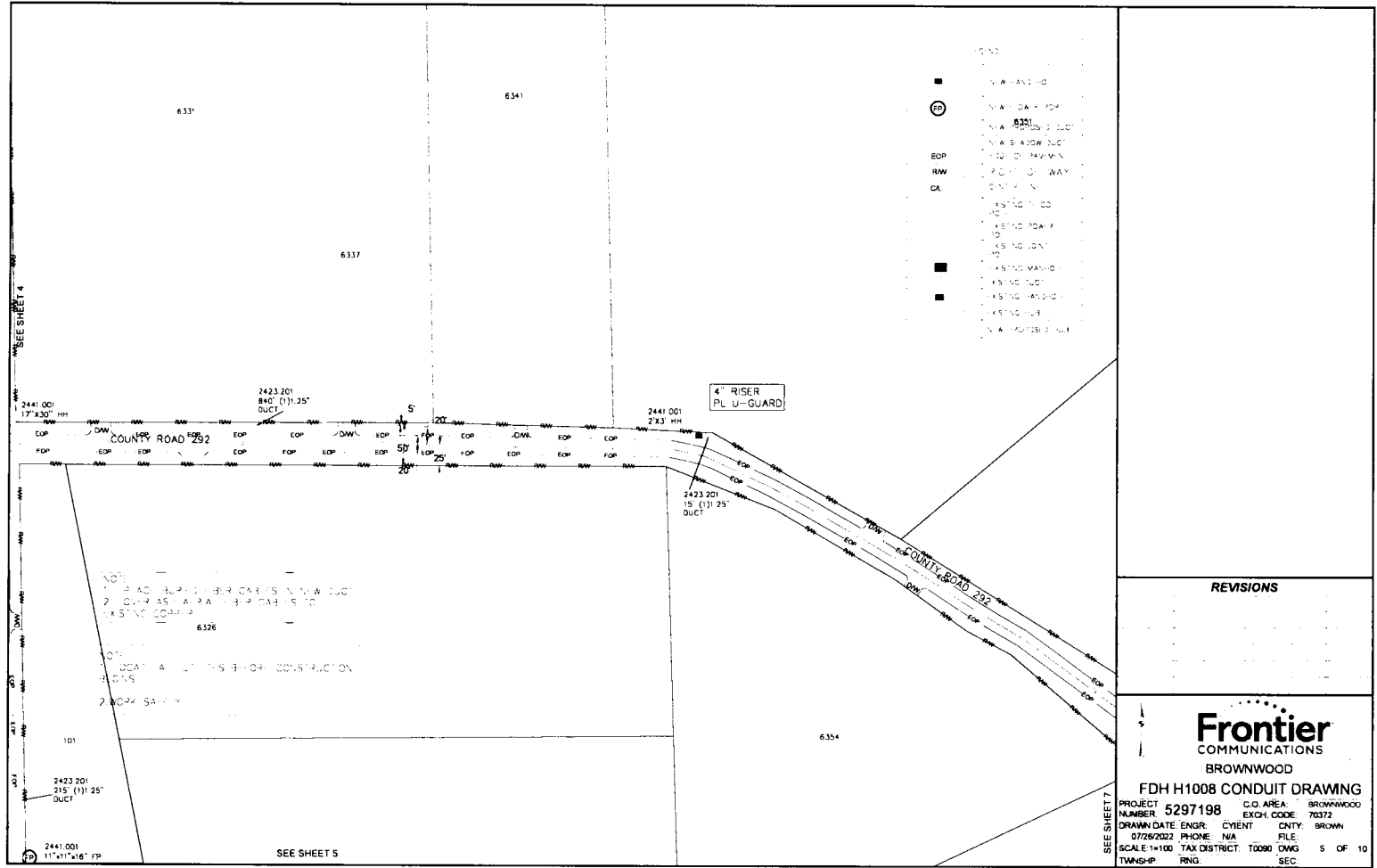


REVISIONS



FDH H1008 CONDUIT DRAWING

PROJECT NUMBER 5297198 C.O. AREA: BROWNWOOD
 EXCH. CODE: 70372
 DRAWN DATE: ENGR. CYIENT. CNTY. BROWN
 07/26/2022 PHONE: NA FILE
 SCALE: 1"=100' TAX DISTRICT: T0090 DWG: 4 OF 10
 TWSHP: RNG SEC



- LEGEND
- █ NEW MANHOLE
 - ⊖ NEW 4" DIA. PDP
 - ⊖ NEW 6" DIA. PDP
 - ⊖ NEW 8" DIA. PDP
 - ⊖ NEW 12" DIA. PDP
 - ⊖ NEW 15" DIA. PDP
 - ⊖ NEW 18" DIA. PDP
 - ⊖ NEW 24" DIA. PDP
 - ⊖ NEW 30" DIA. PDP
 - ⊖ NEW 36" DIA. PDP
 - ⊖ NEW 42" DIA. PDP
 - ⊖ NEW 48" DIA. PDP
 - ⊖ NEW 54" DIA. PDP
 - ⊖ NEW 60" DIA. PDP
 - █ EXISTING MANHOLE
 - ⊖ EXISTING 4" DIA. PDP
 - ⊖ EXISTING 6" DIA. PDP
 - ⊖ EXISTING 8" DIA. PDP
 - ⊖ EXISTING 12" DIA. PDP
 - ⊖ EXISTING 15" DIA. PDP
 - ⊖ EXISTING 18" DIA. PDP
 - ⊖ EXISTING 24" DIA. PDP
 - ⊖ EXISTING 30" DIA. PDP
 - ⊖ EXISTING 36" DIA. PDP
 - ⊖ EXISTING 42" DIA. PDP
 - ⊖ EXISTING 48" DIA. PDP
 - ⊖ EXISTING 54" DIA. PDP
 - ⊖ EXISTING 60" DIA. PDP

REVISIONS

Frontier
COMMUNICATIONS
BROWNWOOD

FDH H1008 CONDUIT DRAWING

PROJECT NUMBER: 5297198 C.O. AREA: BROWNWOOD
 DRAWN DATE: ENGR: CLIENT: EXCH. CODE: 70372
 07/26/2022 PHONE: N/A COUNTY: BROWN
 SCALE: 1"=100' TAX DISTRICT: T0090 DWG: 5 OF 10
 TOWNSHIP: RING. SEC.

SEE SHEET 4

SEE SHEET 7

SEE SHEET 5

NOTE:
 1. ROAD SURFACE ELEVATIONS IN THIS DUC
 2. CONDUITS SHALL BE INSTALLED TO
 EXISTING GRADE.
 6326
 3. INSTALLATION SHALL BE PERFORMED
 WITH CARE.
 4. NO EXCESSIVE WEIGHT SHALL BE
 APPLIED TO THE CONDUIT.

2441.001
17' X 30" HH

2423.201
840' (1)' 25"
DUCT

2441.001
243' HH

4" RISER
PL U-GUARD

2423.201
15' (1)' 25"
DUCT

2423.201
215' (1)' 25"
DUCT

2441.001
11' X 16" FP

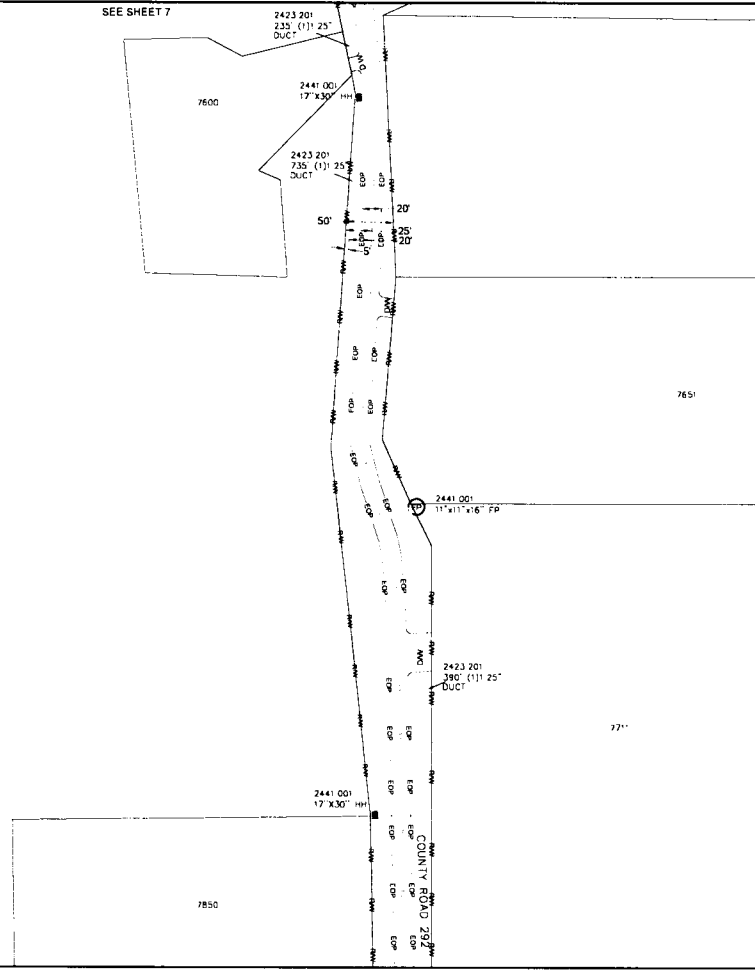
SEE SHEET 7

- V.A. HAS 2 0
- ⊙ V.W. HAS 4 001
- V.W. HAS 000 2 201
- V.W. HAS 000 2 202
- EOP 2 001 OF RAVIN
- RW 2 001 OF RAVIN
- CA CENTER
- ███ EXISTING R.O.D.
- ███ EXISTING R.O.W.P.
- ███ EXISTING ROAD
- ███ EXISTING MAN-D
- ███ EXISTING LOT
- ███ EXISTING HA-3-D
- ███ EXISTING CR
- ███ V.W. HAS 000 3 200

NOTE: SEE SHEET 7 FOR DETAILS AND V.W. DUCT
 2 001 OF RAVIN AREA AND RAVIN DUCT
 EXISTING CENTER

NOTE:
 LOCATION OF THIS R.O.P. CONSTRUCTION
 POINTS

2 4014 S.A.S.S.Y.

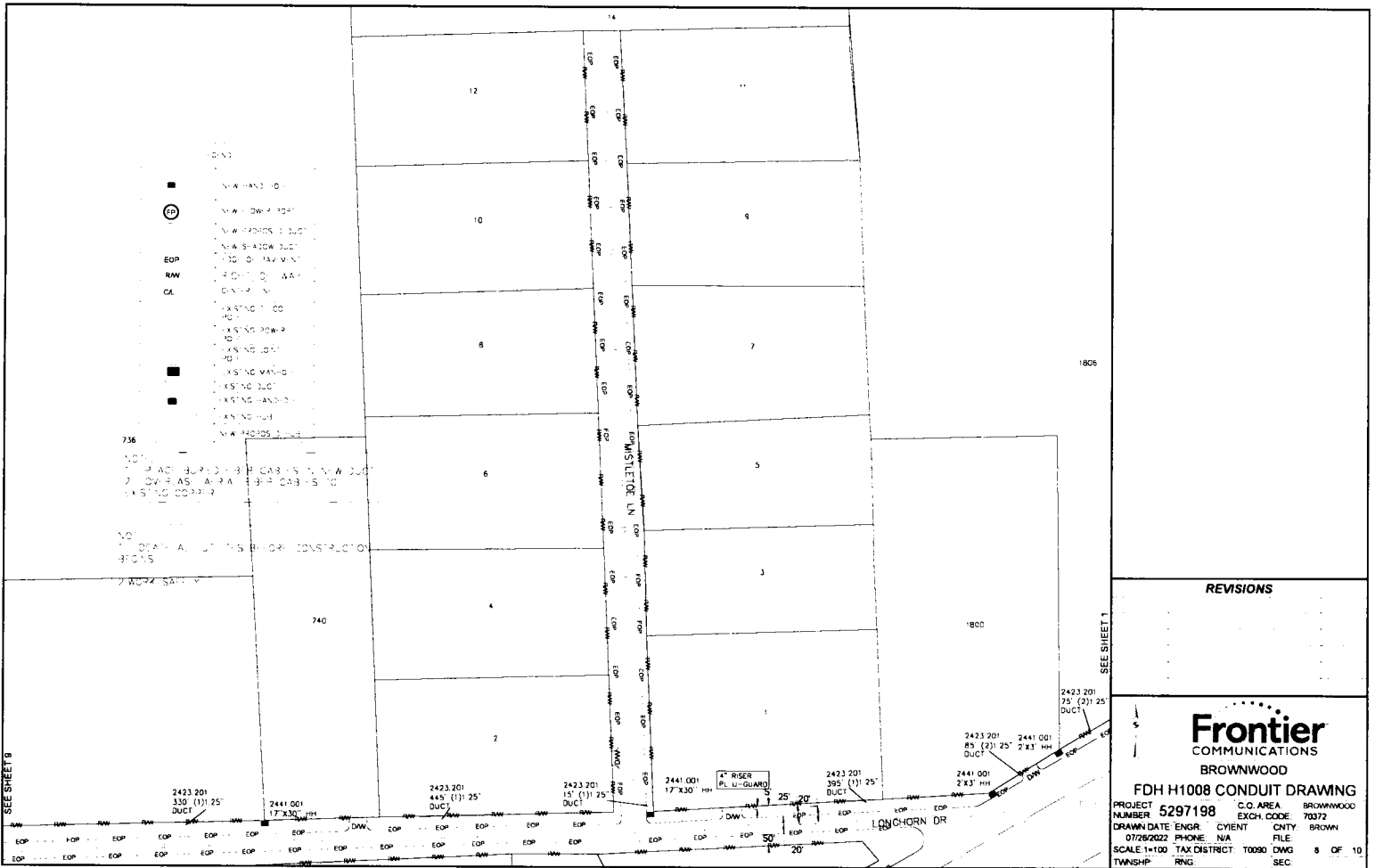


REVISIONS

Frontier
COMMUNICATIONS
BROWNWOOD

FDH H1008 CONDUIT DRAWING

PROJECT NUMBER:	5297198	C.O. AREA:	BROWNWOOD
EXCH. CODE:	70372	CITY:	BROWN
DATE:	07/26/2022	PHONE:	N/A
FILE:		TAX DISTRICT:	T0090
SCALE:	1"=100'	DWG:	7
TOWNSHIP:		RNG:	
		SEC:	



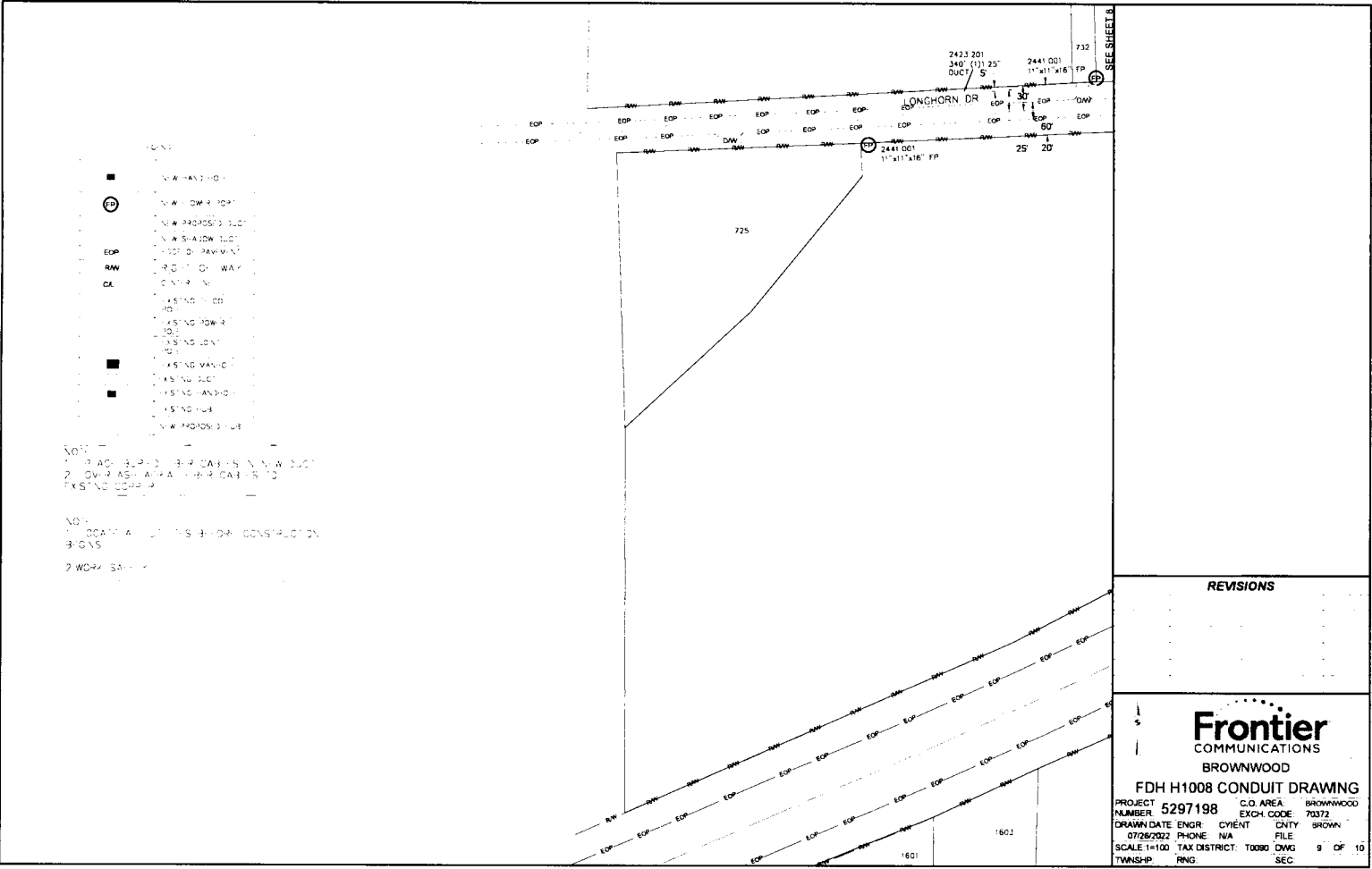
REVISIONS

Frontier
COMMUNICATIONS

BROWNWOOD

FDH H1008 CONDUIT DRAWING

PROJECT NUMBER	5297198	C.O. AREA	BROWNWOOD
DRAWN DATE	ENGR	EXCH CODE	70372
07/26/2022	PHONE: N/A	CNTY	BROWN
SCALE 1"=100'	TAX DISTRICT	FILE	
TWNSHIP	RNG	SEC	8 OF 10



- LEGEND
- EXISTING MANHOLE
 - ⊕ NEW MANHOLE
 - ⊕ NEW POWER POLE
 - NEW PROPOSED DUCT
 - NEW SHADOW DUCT
 - EXISTING DUCT
 - ROAD OR WALK CENTERLINE
 - EXISTING COB
 - EXISTING POWER POLE
 - EXISTING CONDUIT
 - EXISTING MANHOLE
 - EXISTING DUCT
 - EXISTING MANHOLE
 - EXISTING POLE
 - NEW PROPOSED DUCT

NOTES

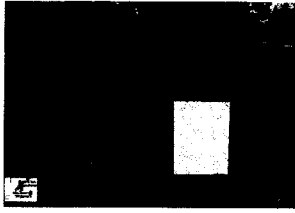
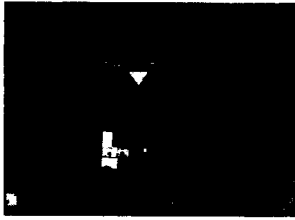
1. 3/4" A.S.T.M. A-53-B PIPE SHALL BE USED FOR ALL NEW DUCT OVER EXISTING MANHOLE OR POLES TO EXISTING CONDUIT.
2. WORK SHALL BE IN ACCORDANCE WITH THE STANDARD SPECIFICATIONS FOR CONSTRUCTION OF CONDUIT SYSTEMS.

REVISIONS

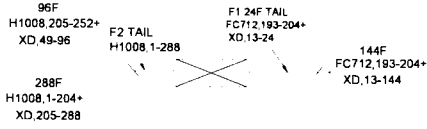
Frontier
COMMUNICATIONS
BROWNWOOD

FDH H1008 CONDUIT DRAWING

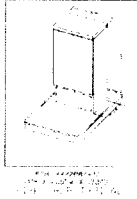
PROJECT NUMBER	5297198	C.O. AREA	BROWNWOOD
EXCH. CODE	70372	DATE	07/28/2022
ENGR.	RYAN	PHONE	NA
TAX DISTRICT	T0090	DWG	9 OF 10
TWN/SH/	RNG	SEC	



**288 FDH SPLICE DETAIL
H1008**



70372-5297198
101 JENKINS SPRING RD
H1008(288)
SPLITTERS 1.32



SPLITTER IN FC712 193-193
OUT H1008A, 1-32

IN FC712 194-194
OUT H1008B, 1-32
IN FC712 195-195
OUT H1008C, 1-32

HUB IN H1008A, 1-32
IN H1008B, 1-32
IN H1008C, 1-32
IN XD, 13-24
IN FC712 193-204+
OUT H1008 1-288

PROPOSED FDH LOCATION
101, JENKINS SPRING RD, BROWNWOOD, TX 70372

HUB ID	H1008
MATERIAL CODE	F3H-1G288UE
MANUFACTURER	COMMSCOPE
TYPE	FDH CABINET 240MM TYP PAD GEN 3
IN	H1008A, 1-32
IN	H1008B, 1-32
IN	H1008C, 1-32
IN	XD, 13-24
IN	FC712, 193-204+
OUT	H1008, 1-288

SPLITTER ID	H1008A
MATERIAL CODE	FPS-G2UPPLAU
MANUFACTURER	COMMSCOPE
TYPE	1.32 SPLITTER GEN 3
IN	FC712, 193-193
OUT	H1008A, 1-32

SPLITTER ID	H1008B
MATERIAL CODE	FPS-G2UPPLAU
MANUFACTURER	COMMSCOPE
TYPE	1.32 SPLITTER GEN 3
IN	FC712, 194-194
OUT	H1008B, 1-32

SPLITTER ID	H1008C
MATERIAL CODE	FPS-G2UPPLAU
MANUFACTURER	COMMSCOPE
TYPE	1.32 SPLITTER GEN 3
IN	FC712, 195-195
OUT	H1008C, 1-32

UNITS ENGINEERED	178
FDH H1008	
LU'S(ACTUAL)	
LU'S(FUTURE)	
MU'S(ACTUAL)	
MU'S(FUTURE)	
BU'S(ACTUAL)	
BU'S(FUTURE)	

FIBER INFO FOR THE LONGEST FIBER SERVED BY THIS FDH			
CABLE #	FEEDER		TOTAL OF
	FC712	H1008	FEEDER & DISTRIBUTION
193	1	1	
SPLICES	5	11	16
LENGTH	26.7700FT	17.2950FT	44.0650FT

REVISIONS

Frontier
COMMUNICATIONS
BROWNWOOD

FDH H1008 CONDUIT DRAWING

PROJECT NUMBER	5297198	C.O. AREA	BROWNWOOD
DRAWN DATE	07/26/2022	EXCH CODE	70372
ENGR	NA	CYENT	BROWN
PHONE	NA	FILE	
SCALE	1"=100'	TAX DISTRICT	T0090
TWNSHP	FRNG	DWG	10 OF 10
		SEC.	

APPROVAL:

Frontier Communication

The Commissioner's Court of Brown County offers no objections to the location on the right-of-way and/or crossing of your proposed buried line as shown by accompanying drawings and notice dated 08-04-2022, except as noted below:

It is further intended that the Commissioner's Court may require the owner to relocate This line, subject to provisions of governing laws, by giving thirty (30) days written notice.

The installation shall not damage any part of the county road and adequate provisions must be made to cause a minimum inconvenience to traffic and adjacent property owners.

Please notify Wayne Shaw, Commissioner of Precinct # 3,

Twenty-four (24) hours prior to starting construction of the line, in order that we may have a representative present.

BROWN COUNTY COMMISSIONERS COURT
OF BROWNWOOD, TEXAS

BY: _____

Joel Kelton - Judge Pro-Tem

Exceptions and/or special requirements:

SUBJECT TO BROWN COUNTY SPECIFICATIONS

CR 292 road bore